

|                         |                        |  |
|-------------------------|------------------------|--|
| VOR OZB<br><b>109.0</b> | APP CRS<br><b>287°</b> | Rwy Idg<br>TDZE<br>Apt Elev<br><b>N/A</b><br><b>N/A</b><br><b>2559</b> |
|-------------------------|------------------------|--|

# VOR-A

GOTHENBURG MUNI (GTE)

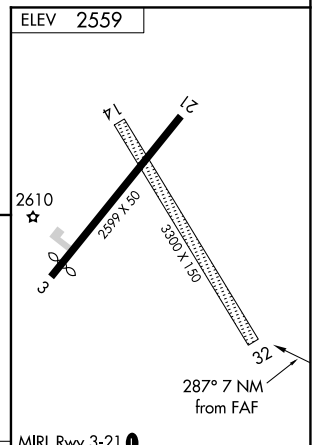
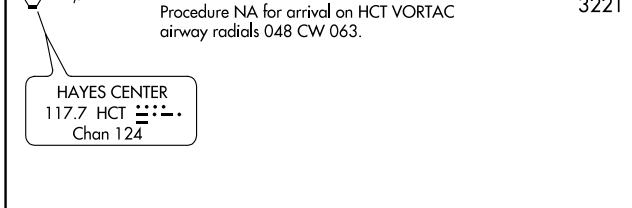
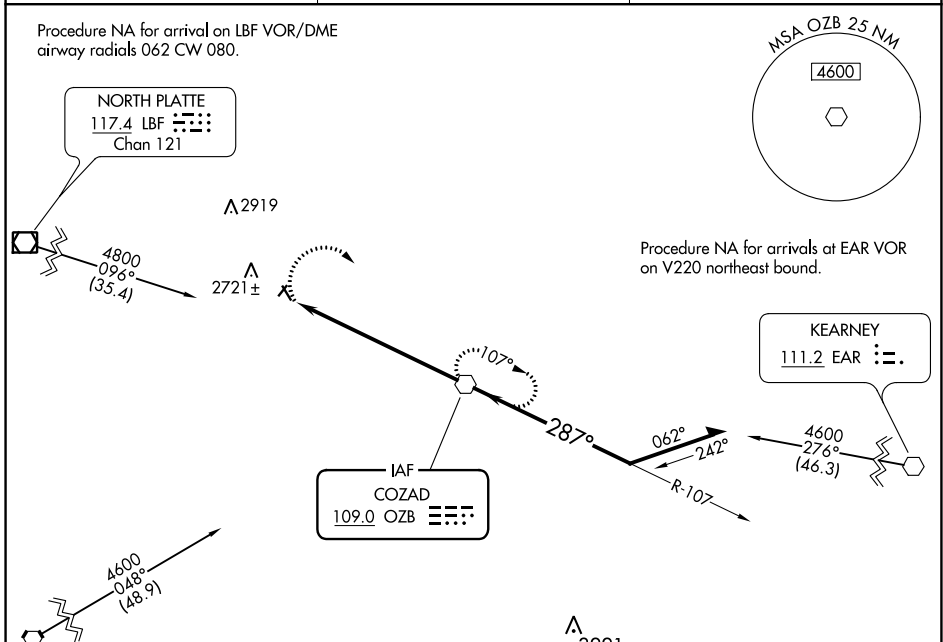
**NA** Circling NA to Rwys 14 and 32. Procedure NA at night. Use Lexington altimeter setting; when not received, use North Platte altimeter setting and increase all MDA 40 feet.

**MISSED APPROACH:** Climbing right turn to 4300 direct OZB VOR and hold.

LXN AWOS-3  
**121.025**

DENVER CENTER  
**132.7 226.675**

UNICOM  
**122.8 (CTAF)**



|          |                       |                       |    |   |
|----------|-----------------------|-----------------------|----|---|
| CATEGORY | A                     | B                     | C  | D |
| CIRCLING | 3120-1<br>561 (600-1) | 3180-1<br>621 (700-1) | NA |   |

|                 |      |      |      |      |      |
|-----------------|------|------|------|------|------|
| FAF to MAP 7 NM |      |      |      |      |      |
| Knots           | 60   | 90   | 120  | 150  | 180  |
| Min:Sec         | 7:00 | 4:40 | 3:30 | 2:48 | 2:20 |

# VOR-A

NC-2, 16 JUN 2022 to 14 JUL 2022

NC-2, 16 JUN 2022 to 14 JUL 2022