

WAAS CH <b>48907</b> <b>W20A</b>	APP CRS <b>198°</b>	Rwy Idg TDZE Apt Elev	<b>4100</b> <b>1224</b> <b>1224</b>
--	------------------------	-----------------------------	---

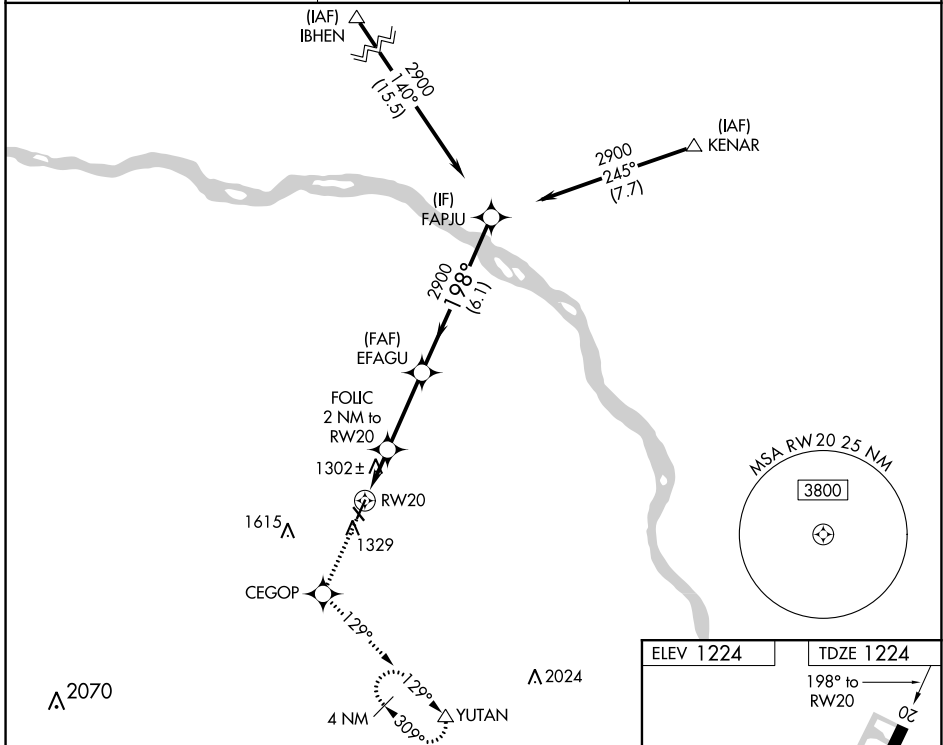
# RNAV (GPS) RWY 20

WAHOO MUNI (AHQ)

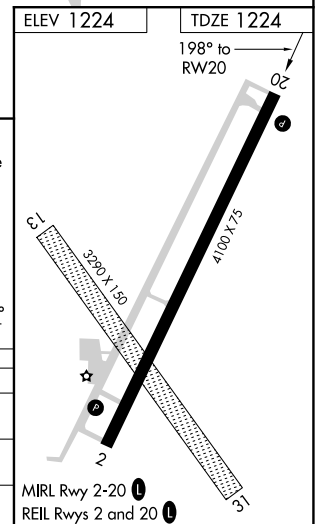
**▽** DME/DME RNP-0.3 NA. Circling to Rwy 13-31 NA. Use Fremont altimeter setting, when not received, use Lincoln altimeter setting and increase DA 25 feet and all MDA 40 feet.

**△** NA MISSED APPROACH: Climb to 4000 direct CEGOP and via 129° track to YUTAN and hold, continue climb-in-hold to 4000.

AWOS-3P <b>125.975</b>	OMAHA APP CON <b>120.1 354.05</b>	UNICOM <b>122.7 (CTAF) 0</b>
---------------------------	--------------------------------------	---------------------------------



4000	CEGOP	YUTAN	EFAGU	FAPJU
↑	✧	△		Procedure Turn NA
*LNAV only.		FOLIC 2 NM to RW20	198°	2900
RW20		1900*	2900	GP 3.00° TCH 52
CATEGORY	A	B	C	D
LPV DA	1507-1	283 (300-1)		NA
LNAV MDA	1600-1	376 (400-1)		NA
CIRCLING	1760-1	536 (600-1)		NA



NC-2, 16 JUN 2022 to 14 JUL 2022

NC-2, 16 JUN 2022 to 14 JUL 2022