

VORTAC RBV <b>113.8</b> Chan <b>85</b>	APP CRS <b>232°</b>	Rwy Idg TDZE Apt Elev	<b>3194</b> <b>87</b> <b>87</b>
--	------------------------	-----------------------------	---------------------------------------

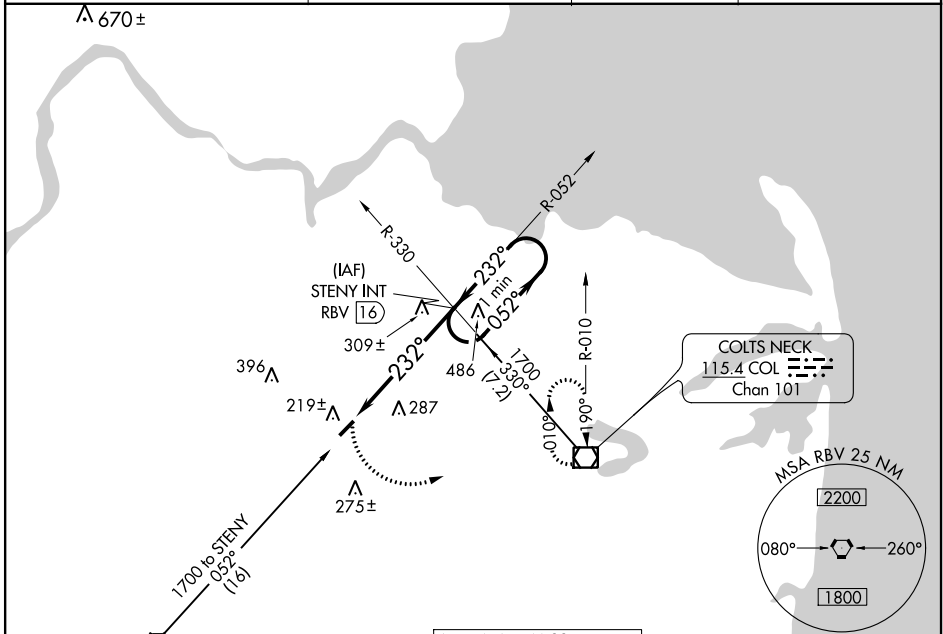
# VOR RWY 24

OLD BRIDGE (3N6)

**Procedure NA at night. Helicopter visibility reduction below 1 SM NA. Use Belmar/Farmingdale altimeter setting; when not received, use Wrightstown altimeter setting and increase all MDA 20 feet.**

**MISSED APPROACH: Climbing left turn to 2000 direct COL VOR/DME and hold.**

BLM AWOS-3PT <b>121.625</b>	MC GUIRE APP CON <b>126.475 363.8</b>	GCO <b>121.725</b>	UNICOM <b>123.075 (CTAF)</b>
--------------------------------	--	-----------------------	---------------------------------

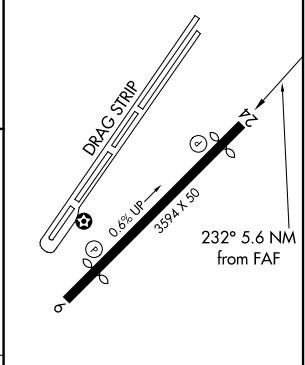
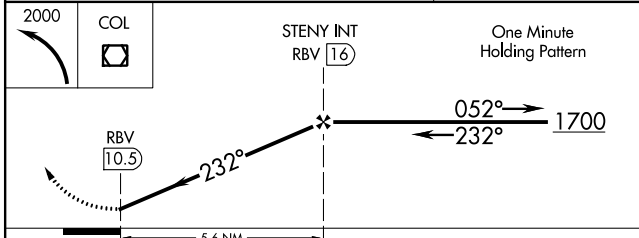


**ALTERNATE MISSED APCH FIX**

**ROBBINSVILLE**  
113.8 RBV  
Chan 85

**STENY INT RBV 16**

ELEV 87	TDZE 87
---------	---------



CATEGORY	A	B	C	D
S-24	600-1	513 (600-1)	NA	
CIRCLING	620-1 533 (600-1)	640-1 553 (600-1)	NA	

REIL Rwy 6 and 24  
MIRL Rwy 6-24

FAF to MAP 5.6 NM

Knots	60	90	120	150	180
Min:Sec	5:36	3:44	2:48	2:14	1:52

NE-2, 16 JUN 2022 to 14 JUL 2022

NE-2, 16 JUN 2022 to 14 JUL 2022