

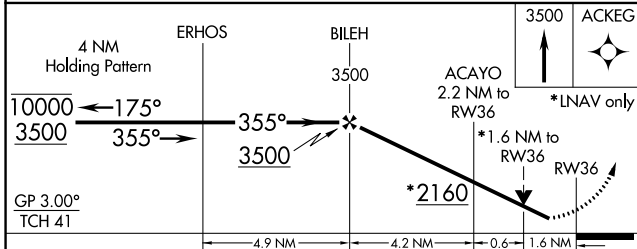
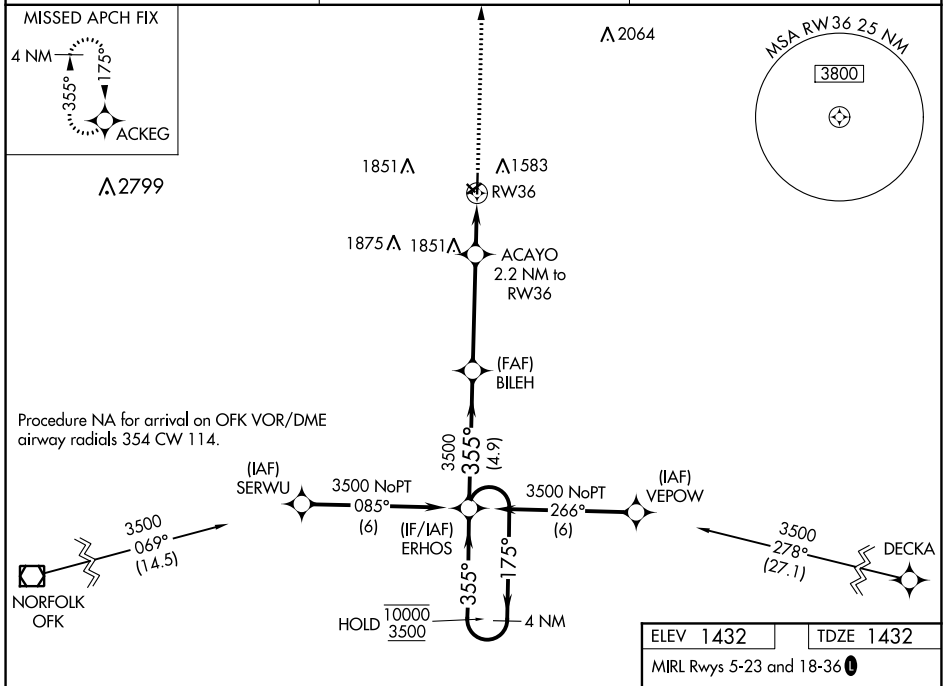
WAAS CH <b>69622</b> <b>W36A</b>	APP CRS <b>355°</b>	Rwy Idg <b>4201</b> TDZE <b>1432</b> Apt Elev <b>1432</b>
--	------------------------	---

# RNAV (GPS) RWY 36

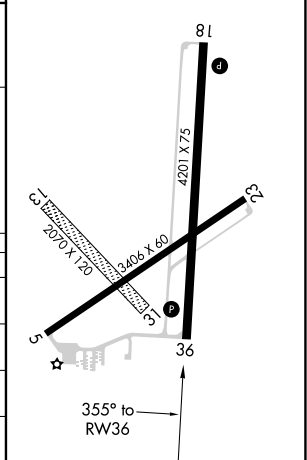
WAYNE MUNI/STAN MORRIS FIELD (LCG)

RNP APCH. ▼ Circling NA to Rwys 13 and 31. Rwy 36 helicopter visibility reduction below 3/4 SM NA. For uncompensated Baro-VNAV systems, LNAV/VNAV NA below -17°C or above 54°C.	MISSED APPROACH: Climb to 3500 direct ACKEG and hold.
--	---

AWOS-3 <b>120.125</b>	SIOUX CITY APP CON * <b>124.6 307.0</b>	UNICOM <b>122.8 (CTAF) 0</b>
--------------------------	--	---------------------------------



ELEV 1432	TDZE 1432
MIRL Rwys 5-23 and 18-36 0	



CATEGORY	A	B	C	D
LPV DA	1682-1	250 (300-1)		NA
LNAV/VNAV DA	1791-1 1/4	359 (400-1 1/4)		NA
LNAV MDA	1980-1	548 (600-1)		NA
CIRCLING	2000-1	568 (600-1)		NA

NC-2, 16 JUN 2022 to 14 JUL 2022

NC-2, 16 JUN 2022 to 14 JUL 2022