

# GIFFA ONE DEPARTURE

AL-6453 (FAA)

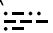
TEXAS GULF COAST RGNL (LBX)  
ANGLETON/LAKE JACKSON, TEXAS

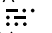
ASOS  
119.925  
CLNC DEL  
125.2  
CTAF  
123.0  
HOUSTON DEP CON  
134.45 284.0

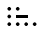
**TOP ALTITUDE:  
ASSIGNED BY ATC**

NOTE: RADAR required.  
NOTE: For aircraft destined for the DFW  
terminal area only.

CEDAR CREEK  
114.8 CQY   
Chan 95

LEONA  
110.8 LOA   
Chan 45

DAISETTA  
116.9 DAS   
Chan 116

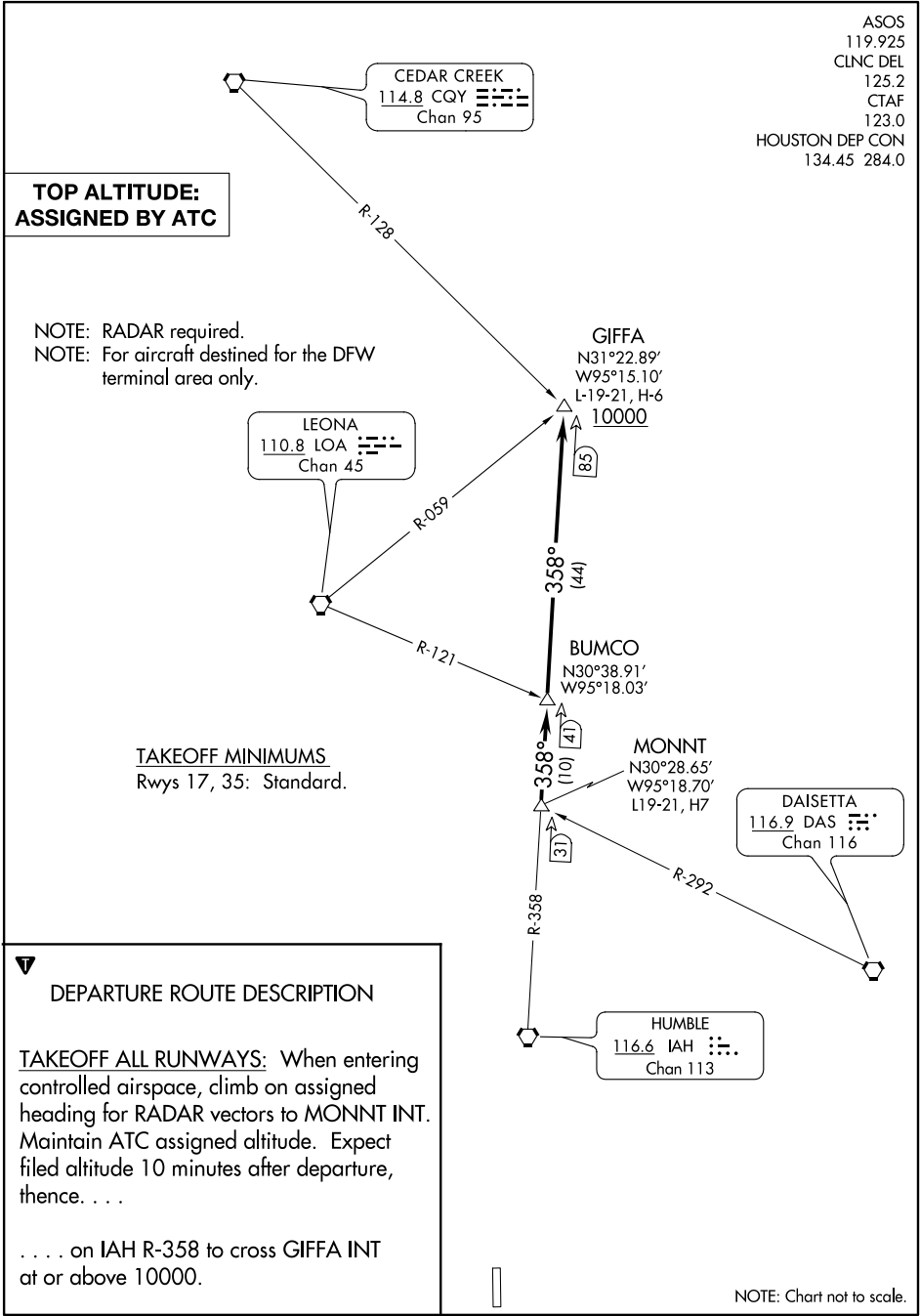
HUMBLE  
116.6 IAH   
Chan 113

TAKEOFF MINIMUMS  
Rwys 17, 35: Standard.

**DEPARTURE ROUTE DESCRIPTION**

TAKEOFF ALL RUNWAYS: When entering controlled airspace, climb on assigned heading for RADAR vectors to MONNT INT. Maintain ATC assigned altitude. Expect filed altitude 10 minutes after departure, thence. . . .

. . . . on IAH R-358 to cross GIFFA INT at or above 10000.



NOTE: Chart not to scale.

# GIFFA ONE DEPARTURE

SC-5, 16 JUN 2022 to 14 JUL 2022

SC-5, 16 JUN 2022 to 14 JUL 2022