

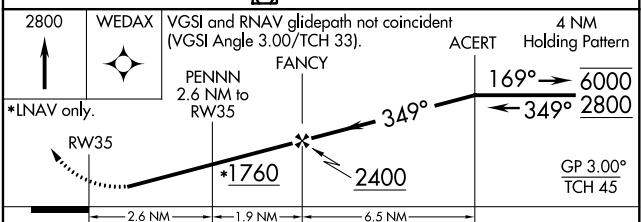
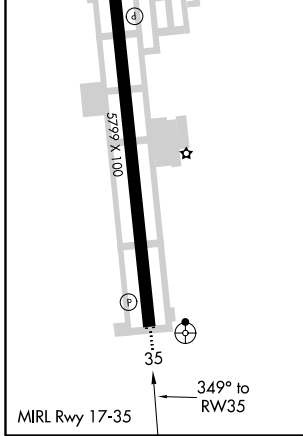
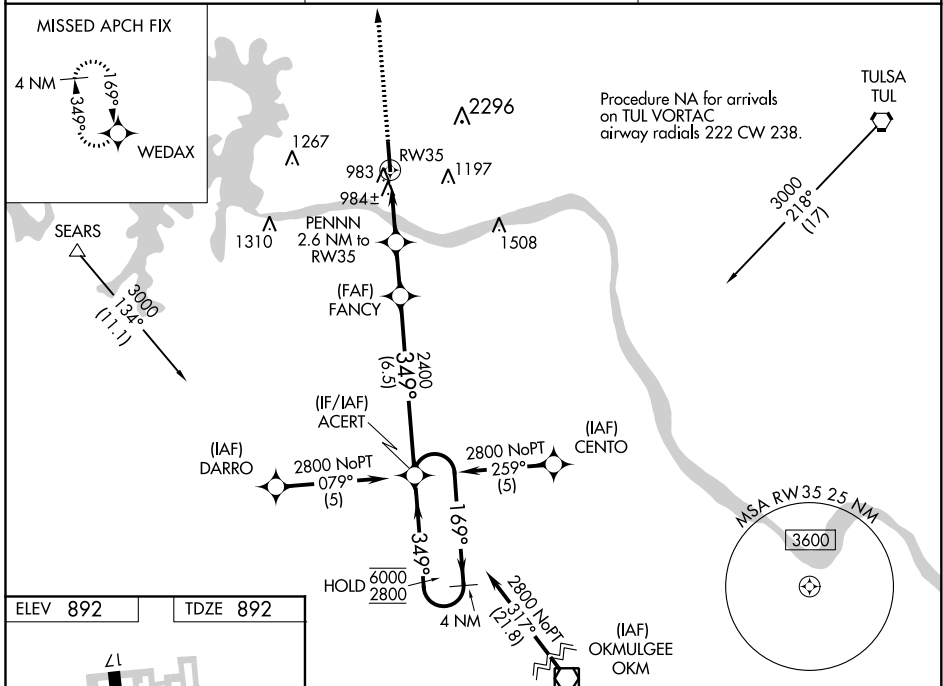
WAAS CH <b>57912</b> <b>W35A</b>	APP CRS <b>349°</b>	Rwy Idg TDZE <b>892</b> Apt Elev <b>892</b>	<b>5799</b>
--	------------------------	---	-------------

# RNAV (GPS) RWY 35

WILLIAM R POGUE MUNI (OWP)

RNP APCH.	ODALS	MISSED APPROACH: Climb to 2800 direct WEDAX and hold.
<p>▼ Rwy 35 helicopter visibility reduction below 1 SM NA. For uncompensated Baro-VNAV systems, LNAV/VNAV NA below -16°C or above 54°C. Procedure NA at night. Circling NA for Cat C east of Rwy 17-35. Inop table does not apply.</p>		

AWOS-3PT <b>118.325</b>	TULSA APP CON <b>124.0 338.3</b>	UNICOM <b>122.7 (CTAF)</b>
----------------------------	-------------------------------------	-------------------------------



CATEGORY	A	B	C	D
LPV DA	1202-1	310 (400-1)		NA
LNAV/VNAV DA	1317-1½	425 (500-1½)		NA
LNAV MDA	1240-1	348 (400-1)		NA
<b>C</b> CIRCLING	1440-1	548 (600-1)	1440-1½ 548 (600-1½)	NA

SC-1, 16 JUN 2022 to 14 JUL 2022

SC-1, 16 JUN 2022 to 14 JUL 2022