

| | | |
|-------------|----------|-------------|
| APP CRS | Rwy Idg | 5003 |
| 235° | TDZE | 1458 |
| | Apt Elev | 1458 |

RNAV (GPS) RWY 24

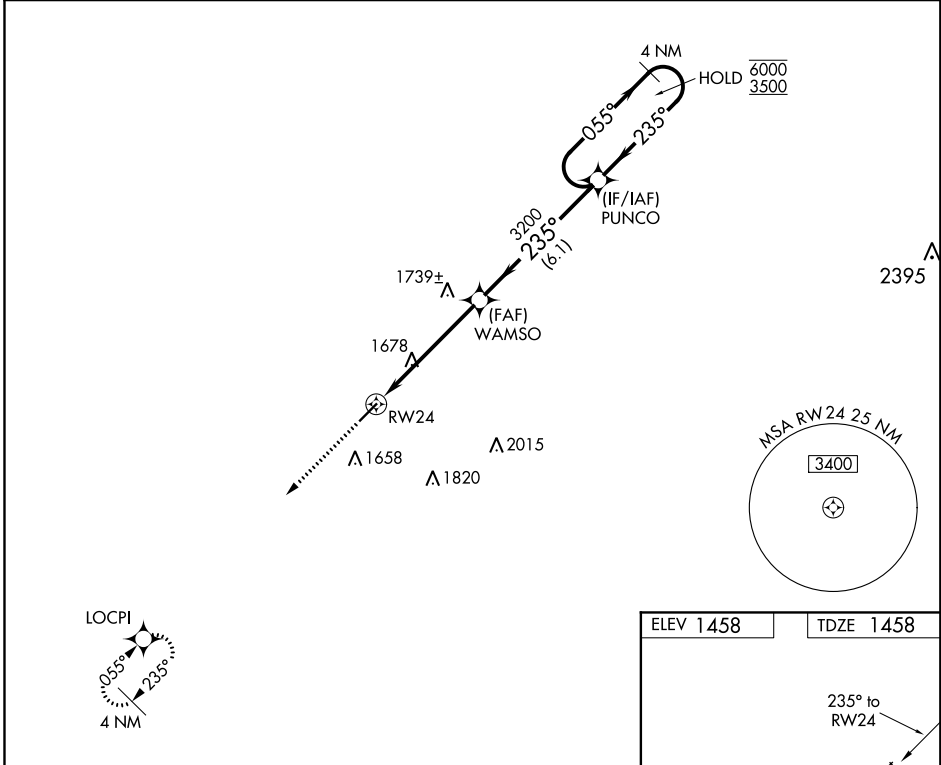
CLARION COUNTY (A.X.Q)

RNP APCH.

⚠ **NA** Rwy 24 helicopter visibility reduction below 3/4 SM NA. VDP NA when using Dubois altimeter setting. When local altimeter setting not received, use Dubois altimeter setting and increase all MDA 120 feet and LNAV Cat B/C/D and Circling Cat C visibility 5/8 SM, Circling Cat B visibility 1/4 SM, Cat D visibility 1/2 SM.

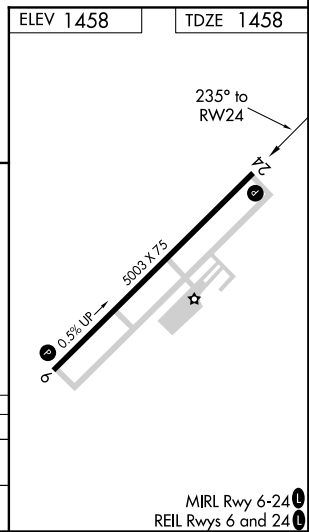
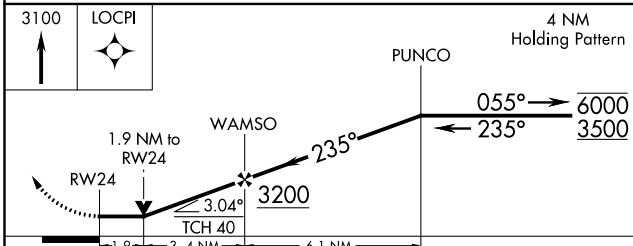
MISSED APPROACH:
Climb to 3100 direct
LOCP1 and hold.

| | | |
|--------------------------|-------------------------------------------|---------------------------------|
| AWOS-3 118.275 | CLEVELAND CENTER 126.725 291.65 | UNICOM 122.8 (CTAF) 0 |
|--------------------------|-------------------------------------------|---------------------------------|



NE-4, 16 JUN 2022 to 14 JUL 2022

NE-4, 16 JUN 2022 to 14 JUL 2022



| CATEGORY | A | B | C | D |
|----------|--------------------|---|----------------------------|----------------------------|
| LNAV MDA | 2100-1 642 (700-1) | | 2100-1 7/8 642 (700-1 7/8) | 2100-2 642 (700-2) |
| CIRCLING | 2100-1 642 (700-1) | | 2100-1 7/8 642 (700-1 7/8) | 2180-2 7/4 722 (800-2 1/4) |

MIRL Rwy 6-24 0
REIL Rwys 6 and 24 0