

WAAS CH <b>45709</b> W06A	APP CRS <b>060°</b>	Rwy Idg TDZE Apt Elev	<b>5501</b> <b>526</b> <b>526</b>
---------------------------------	------------------------	-----------------------------	---

# RNAV (GPS) RWY 6

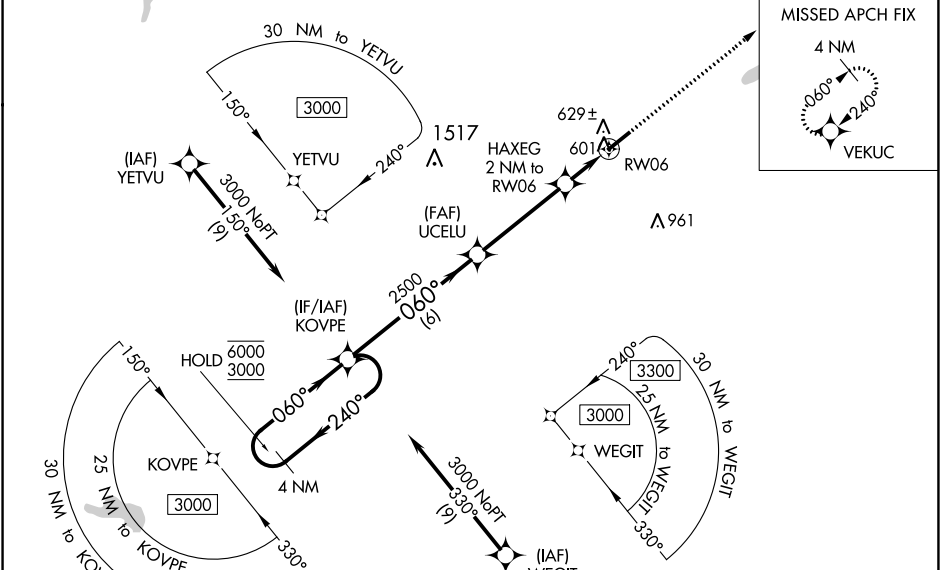
HENDERSON/OXFORD (HNZ)

RNP APCH - GPS.

▼ For uncompensated Baro-VNAV systems, LNAV/VNAV NA below -16°C or above 54°C.  
 ▲ When local altimeter setting not received, use Roxboro altimeter setting: increase all DA to 875 feet and all visibilities 1/8 SM; increase all MDA 80 feet and visibility Cats C and D 1/4 SM. Baro-VNAV and VDP NA when using Roxboro altimeter setting.  
 Rwy 6 helicopter visibility reduction below 3/4 SM NA.

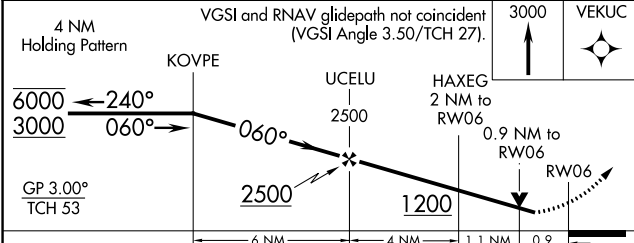
MISSED APPROACH: Climb to 3000 direct VEKUC and hold.

AWOS-3 <b>118.625</b>	RALEIGH APP CON <b>132.35 256.9</b>	GCO <b>135.075</b>	UNICOM <b>122.8(CTAF)</b>
--------------------------	--	-----------------------	------------------------------



SE-2, 16 JUN 2022 to 14 JUL 2022

SE-2, 16 JUN 2022 to 14 JUL 2022



ELEV 526	TDZE 526
----------	----------

CATEGORY	A	B	C	D
LPV DA		811-7/8	285 (300-7/8)	
LNAV/VNAV DA		810-7/8	284 (300-7/8)	
LNAV MDA		880-1	354 (400-1)	
CIRCLING	960-1	980-1	1100-1 1/2	1280-2 1/2
	434 (500-1)	454 (500-1)	574 (600-1 1/2)	754 (800-2 1/2)

