

WAAS CH 42931 W17A	APP CRS 174°	Rwy Idg TDZE 229 Apt Elev 229	5003
--	------------------------	---	-------------

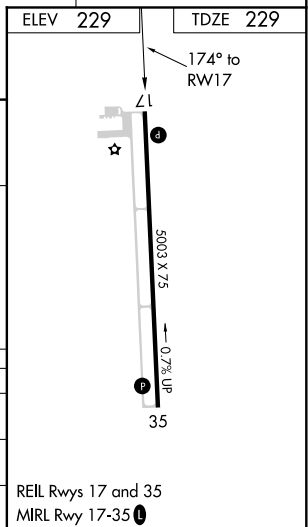
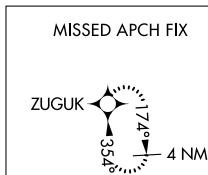
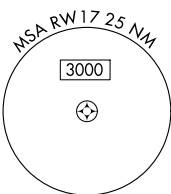
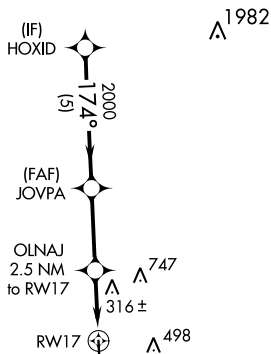
RNAV (GPS) RWY 17

NAVASOTA MUNI (60R)

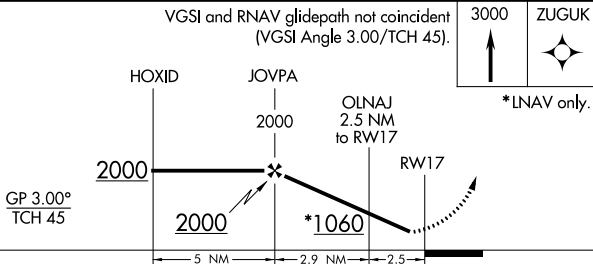
RNP APCH.	<p>▼ Use Brenham altimeter setting; when not received, use College Station altimeter setting and increase all DA 6 feet and all MDA 20 feet. ▲ NA Baro-VNAV NA. Rwy 17 helicopter visibility reduction below 3/4 SM NA.</p>	MISSED APPROACH: Climb to 3000 direct ZUGUK and hold.
-----------	--	---

11R AWOS-3 121.125	HOUSTON APP CON 134.3 360.85	CTAF 122.9	123.3
------------------------------	--	----------------------	--------------

RADAR REQUIRED



VGSI and RNAV glidepath not coincident (VGSI Angle 3.00/TCH 45).



	5 NM		2.9 NM		2.5	
CATEGORY	A	B	C	D		
LPV DA	529-1		300 (300-1)			
LNAV/VNAV DA	635-1 3/8		406 (500-1 3/8)			
LNAV MDA	620-1 391 (400-1)		620-1 3/8 391 (400-1 3/8)			

SC-5, 16 JUN 2022 to 14 JUL 2022

SC-5, 16 JUN 2022 to 14 JUL 2022