

WAAS CH 42831 W35A	APP CRS 354°	Rwy Idg 5003 TDZE 215 Apt Elev 229
--	------------------------	---

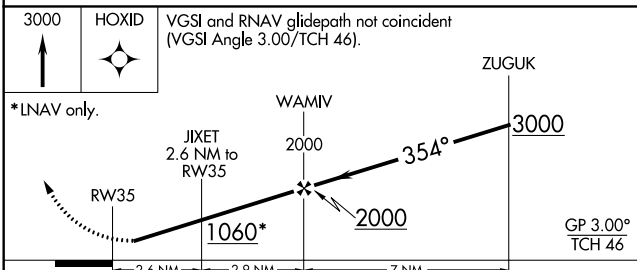
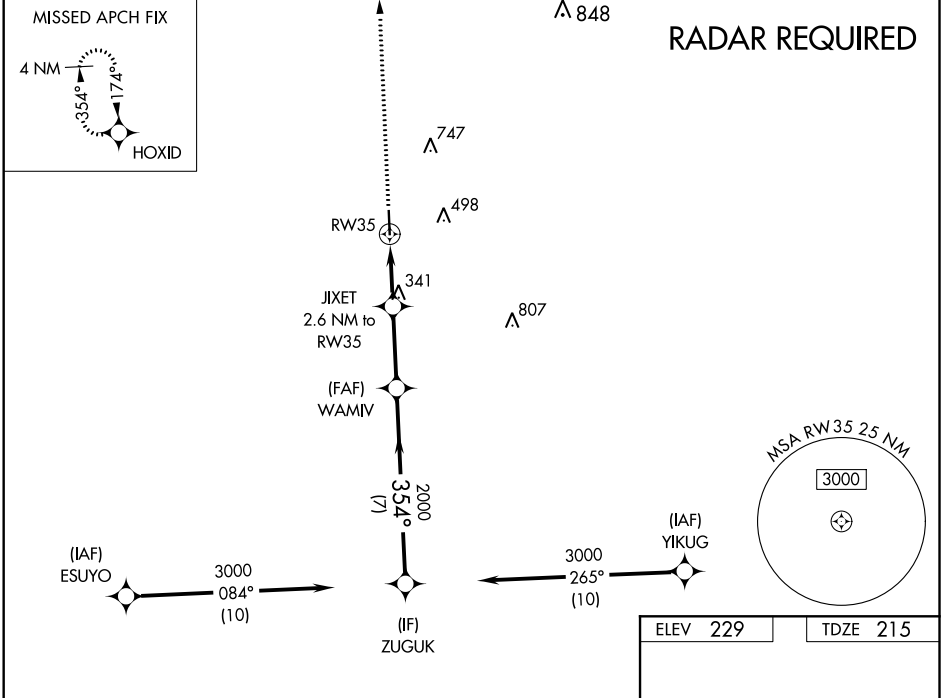
RNAV (GPS) RWY 35

NAVASOTA MUNI (60R)

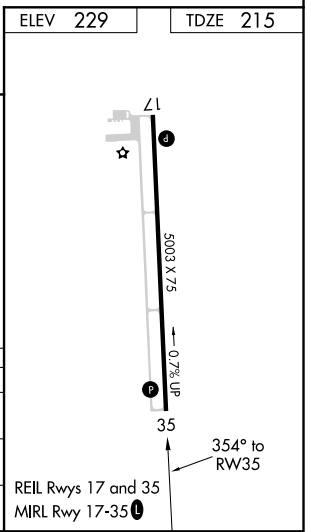
RNP APCH.
 ▼ Use Brenham altimeter setting, when not received use College Station altimeter setting and increase all DA 6 feet and all MDA 20 feet.
 ▲ NA Rwy 35 helicopter visibility reduction below 3/4 SM NA. Baro-VNAV NA.

MISSED APPROACH: Climb to 3000 direct HOXID and hold.

11R AWOS-3 121.125	HOUSTON APP CON 134.3 360.85	CTAF 122.9	123.3
------------------------------	--	----------------------	--------------



3000	HOXID	VGSi and RNAV glidepath not coincident (VGSi Angle 3.00/TCH 46).	
*LNAV only.			
RWY 35		JIXET 2.6 NM to RWY 35	ZUGUK
2.6 NM		2.9 NM	7 NM
CATEGORY	A	B	C
LPV DA	525-1 310 (300-1)		
LNAV/VNAV DA	609-1 3/8 394 (400-1 3/8)		
LNAV MDA	660-1 445 (500-1)		660-1 3/8 445 (500-1 3/8)



SC-5, 16 JUN 2022 to 14 JUL 2022

SC-5, 16 JUN 2022 to 14 JUL 2022