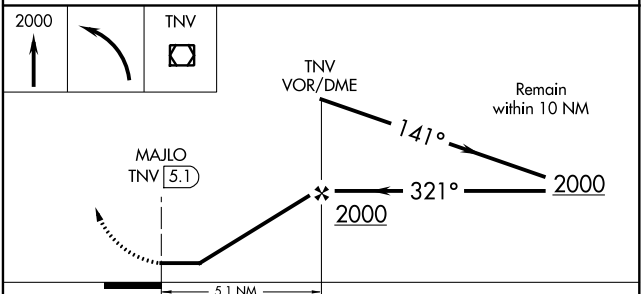
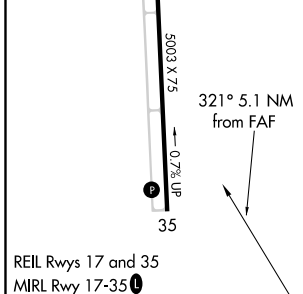
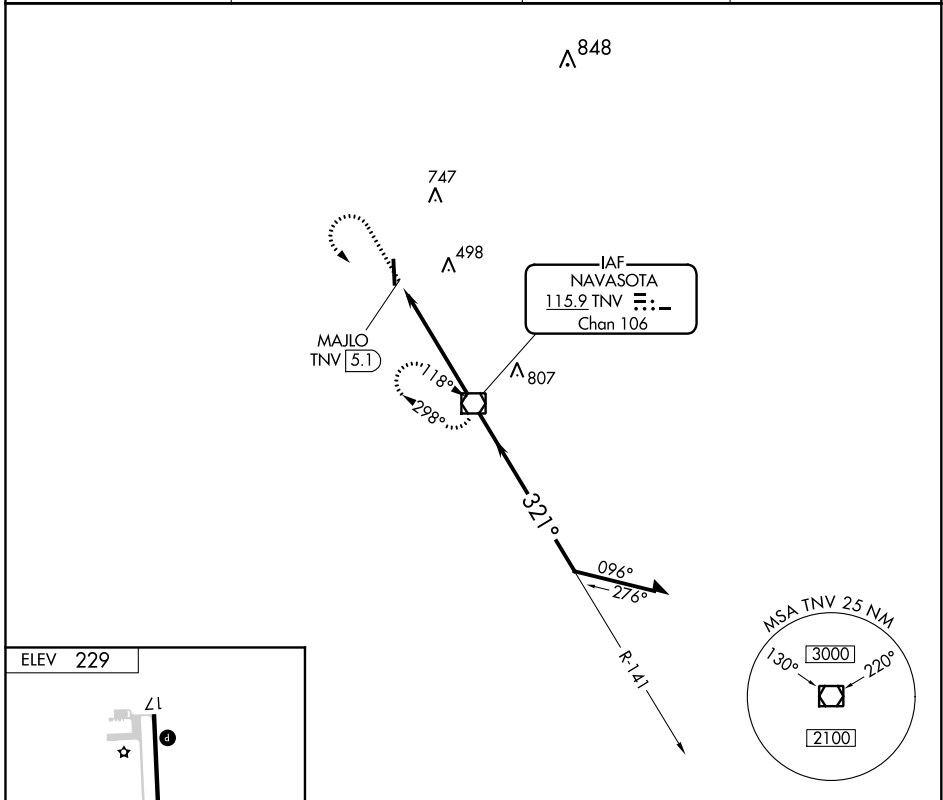


VOR/DME TNV 115.9 Chan 106	APP CRS 321°	Rwy Idg TDZE Apt Elev	N/A N/A 229
--	------------------------	-----------------------------	--

VOR-A
NAVASOTA MUNI (60R)

▼ Use Brenham altimeter setting; when not received, use College Station altimeter setting and increase all MDAs 20 feet, increase Circling Cats C/D visibility 1/4 SM.
▲ NA MISSED APPROACH: Climb to 2000 then left turn direct TNV VOR/DME and hold.

11R AWOS-3 121.125	HOUSTON APP CON 134.3 360.85	CTAF 122.9	123.3 0
------------------------------	--	----------------------	----------------



FAF to MAP 5.1 NM						
Knots	60	90	120	150	180	
Min:Sec	5:06	3:24	2:33	2:02	1:42	
CATEGORY	A		B		C	D
CIRCLING	820-1		591 (600-1)		1100-2½ 871 (900-2½)	1100-2¾ 871 (900-2¾)

SC-5, 16 JUN 2022 to 14 JUL 2022

SC-5, 16 JUN 2022 to 14 JUL 2022