

WAAS CH <b>99540</b> <b>W36A</b>	APP CRS <b>360°</b>	Rwy Idg TDZE Apt Elev	<b>3200</b> <b>968</b> <b>968</b>
--	------------------------	-----------------------------	---

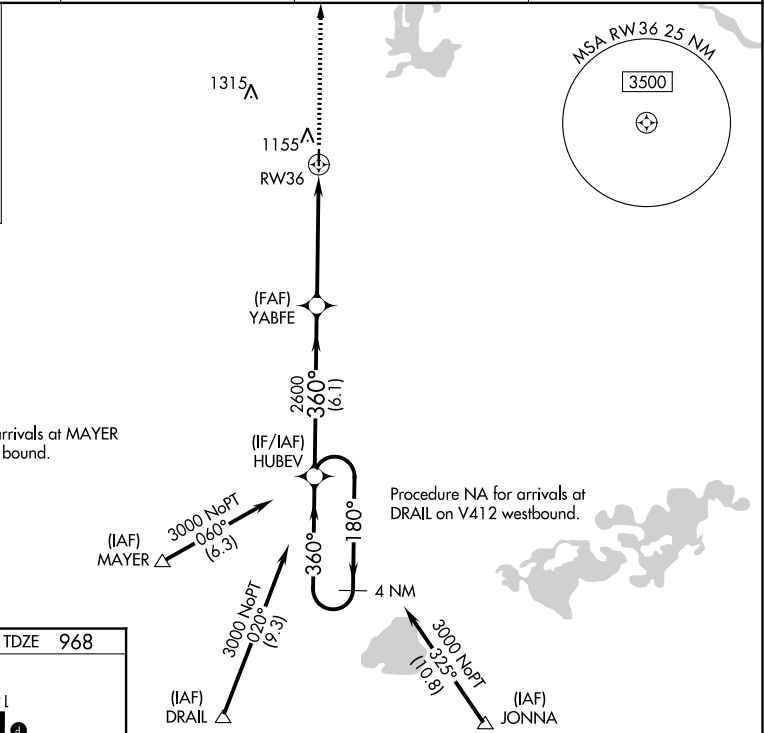
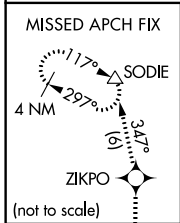
# RNAV (GPS) RWY 36

BUFFALO MUNI (CFE)

**▽** For uncompensated Baro-VNAV systems, LNAV/VNAV NA below -16°C (4°F) or above 54°C (130°F). Circling Rwy 18 NA at night. Rwy 36 helicopter visibility reduction below ¾ SM NA. DME/DME RNP-0.3 NA.

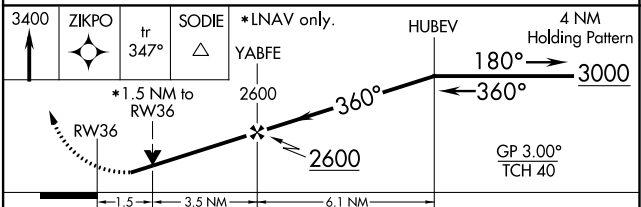
MISSED APPROACH: Climb to 3400 direct ZIKPO and track 347° to SODIE and hold.

AWOS-3PT <b>120.45</b>	MINNEAPOLIS APP CON <b>126.5 335.65</b>	GCO <b>121.725</b>	UNICOM <b>122.8</b> (CTAF) <b>①</b>
---------------------------	--	-----------------------	--



ELEV 968	TDZE 968
REIL Rwy 18 and 36 <b>①</b>	
MIRL Rwy 18-36 <b>①</b>	

81  
3200 X 75  
36  
0.4% UP  
360° to RW36



CATEGORY	A	B	C	D
LPV DA	1280-1 1/8	312 (400-1 1/8)		NA
LNAV/VNAV DA	1396-1 1/2	428 (500-1 1/2)		NA
LNAV MDA	1460-1	492 (500-1)	1460-1 3/8 492 (500-1 3/8)	NA
<b>C</b> CIRCLING	1460-1	492 (500-1)	1540-1 1/2 572 (600-1 1/2)	NA

NC-1, 16 JUN 2022 to 14 JUL 2022

NC-1, 16 JUN 2022 to 14 JUL 2022