

WAAS CH <b>40439</b> W01A	APP CRS <b>009°</b>	Rwy Idg TDZE Apt Elev	<b>4000</b> <b>268</b> <b>293</b>
---------------------------------	------------------------	-----------------------------	---

# RNAV (GPS) RWY 1

AMBLER (AFM) (PAFM)

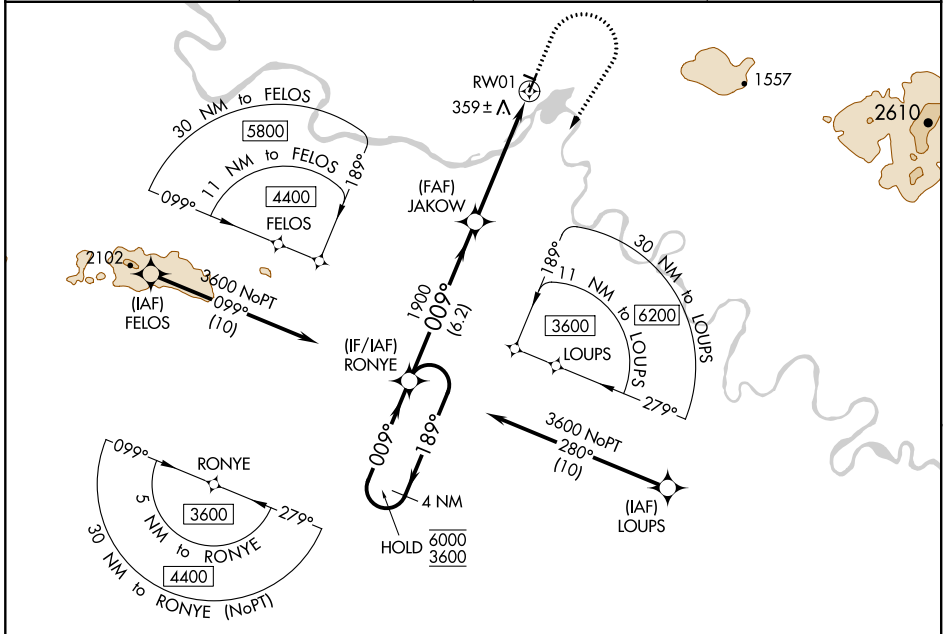
RNP APCH.

**⚠** Circling NA west of Rwy 1-19. For uncompensated Baro-VNAV systems, LNAV/VNAV NA below -20°C or above 42°C.

**❄** -37°C

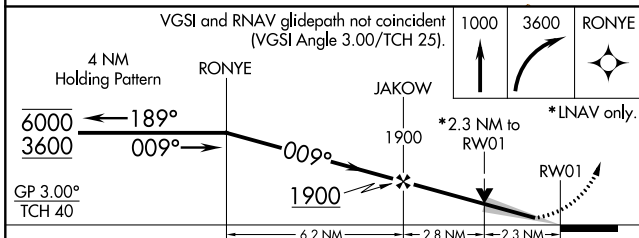
**MISSED APPROACH:** Climb to 1000 then climbing right turn to 3600 direct RONYE and hold, continue climb-in-hold to 3600. # Missed approach requires minimum climb of 210 feet per NM to 2300.

AWOS-3P <b>132.1</b>	ANCHORAGE CENTER <b>119.2 263.0</b>	KOTZEBUE RADIO <b>122.0</b>	CTAF <b>122.7</b>
-------------------------	--	--------------------------------	----------------------

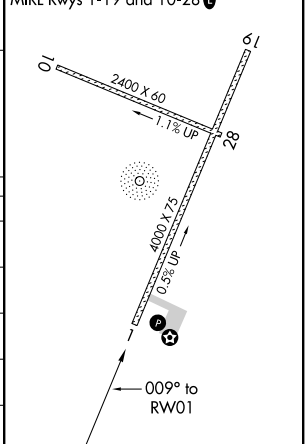


AK, 19 MAY 2022 to 14 JUL 2022

AK, 19 MAY 2022 to 14 JUL 2022



ELEV 293	TDZE 268
----------	----------



CATEGORY	A	B	C	D
LPV DA#		518-1	250 (300-1)	
LPV DA		686-1 $\frac{3}{8}$	418 (400-1 $\frac{1}{8}$ )	
LNAV/VNAV DA		811-1 $\frac{7}{8}$	543 (600-1 $\frac{1}{8}$ )	
LNAV MDA	1000-1 732 (800-1)	1000-1 $\frac{1}{4}$ 732 (800-1 $\frac{1}{4}$ )	1000-1 $\frac{7}{8}$ 732 (800-1 $\frac{7}{8}$ )	732 (800-1 $\frac{7}{8}$ )
<b>C</b> CIRCLING	1000-1 707 (800-1)	1000-1 $\frac{1}{4}$ 707 (800-1 $\frac{1}{4}$ )	1000-2 707 (800-2)	1000-2 $\frac{1}{4}$ 707 (800-2 $\frac{1}{4}$ )