

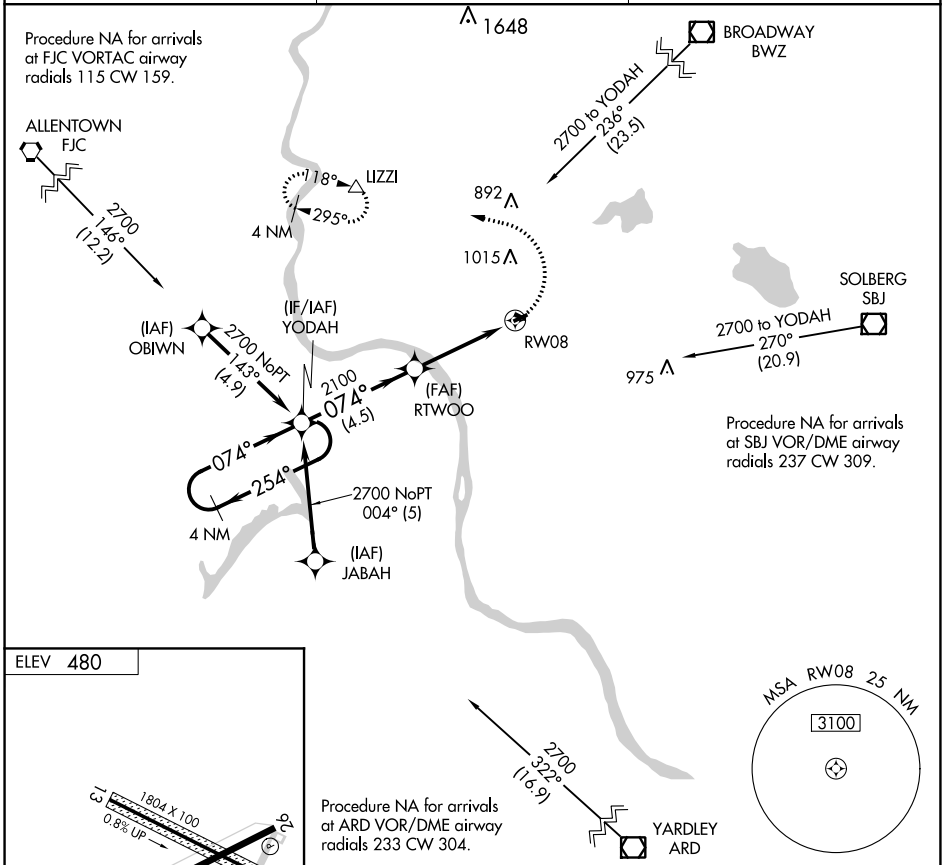
APP CRS	Rwy Idg	N/A
074°	TDZE	N/A
	Apt Elev	480

# RNAV (GPS)-A

ALEXANDRIA (N85)

<p><b>▽</b> DME/DME RNP-0.3 NA. Use Lehigh Valley Intl, Allentown, PA altimeter setting. Procedure NA at night. Helicopter visibility reduction below 1 SM NA.</p>	<p><b>▲</b> MISSED APPROACH: Climbing left turn to 3000 direct LWZ and hold, continue climb-in-hold to 3000.</p>
--	--

<p>ALLENTOWN APP CON <b>119.65 124.45 351.8</b></p>	<p>UNICOM <b>122.975 (CTAF)</b></p>	<p><b>121.8</b></p>
---	---	---------------------



<p>4 NM Holding Pattern YODAH</p> <p>2700 ← 254°</p> <p>074° →</p> <p>074° to RW08</p>	<p>VGSI and descent angles not coincident (VGSI Angle 4.00/TCH 30).</p> <p>RTWOO</p> <p>2100</p> <p>3.77° TCH 35</p> <p>4.5 NM</p> <p>4 NM</p>	<p>3000</p> <p>LWZ</p> <p>▲</p>
<p>CATEGORY</p> <p>A</p>	<p>B</p> <p>C</p> <p>D</p>	<p>NA</p>
<p><b>☑</b> CIRCLING</p> <p>1240-1</p> <p>760 (800-1)</p>	<p>NA</p>	

NE-2, 16 JUN 2022 to 14 JUL 2022

NE-2, 16 JUN 2022 to 14 JUL 2022