

NDB RWY 18

CLARK RGNL (JVY)

LOM JV 331	APP CRS 182°	Rwy Idg TDZE Apt Elev	7000 476 476
----------------------	------------------------	-----------------------------	---

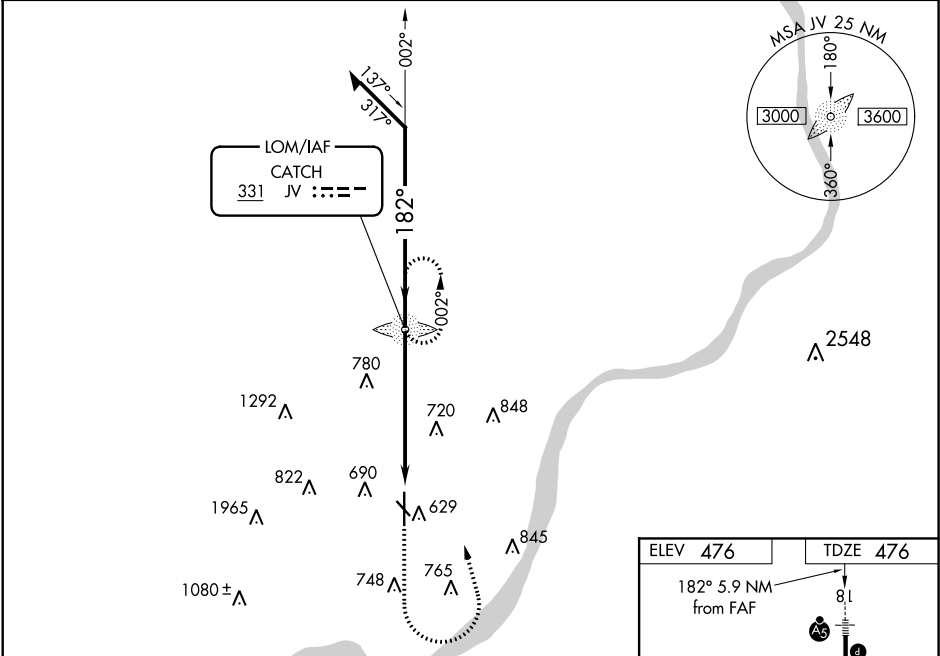
RADAR required for procedure entry.

▽ Circling NA for Cat D southwest of Rws 14 and 36. Circling Rwy 14, 32 NA at night. For inop ALS, increase S-18 Cats A and B visibility to 1 SM and Cats C and D to 1 3/4 SM. When local climeter setting not received, use Louisville Muhammad Ali Intl climeter setting and increase all MDAs 40 feet and Circling visibility Cat C 1/8 SM. For inop ALS when using Louisville Muhammad Ali Intl climeter setting, increase S-18 Cats A and B visibility to 1 SM.



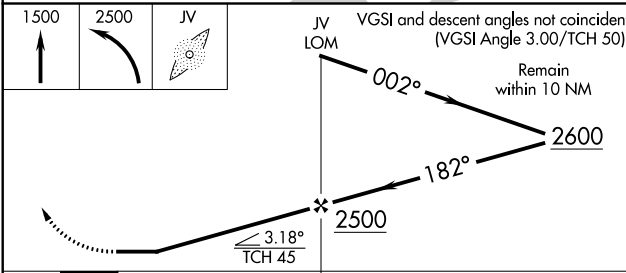
MISSED APPROACH: Climb to 1500 then climbing left turn to 2500 direct CATCH LOM and hold.

AWOS-3 118.575	LOUISVILLE APP CON 132.075 327.0	CLNC DEL 118.05	UNICOM 122.7 (CTAF) 0
--------------------------	--	---------------------------	---------------------------------



EC-2, 16 JUN 2022 to 14 JUL 2022

EC-2, 16 JUN 2022 to 14 JUL 2022



ELEV 476	TDZE 476
----------	----------

182° 5.9 NM from FAF

REIL Rws 14 and 32
REIL Rws 18 and 36
MIRL Rws 14-32 and 18-36

FAF to MAP 5.9 NM

Knots	60	90	120	150	180
Min:Sec	5:54	3:56	2:57	2:22	1:58

CATEGORY	A	B	C	D
S-18	1080-3/4 604 (700-3/4)	1080-1 604 (700-1)	1080-1 3/8 604 (700-1 3/8)	1100-2 624 (700-2)
C CIRCLING	1080-1 604 (700-1)	1080-1 604 (700-1)	1080-1 3/4 604 (700-1 3/4)	1100-2 624 (700-2)