

| | | | |
|--|------------------------|-----------------------------|---|
| WAAS CH 78027 W30A | APP CRS 298° | Rwy Idg TDZE Apt Elev | 4268 2613 2615 |
|--|------------------------|-----------------------------|---|

RNAV (GPS) RWY 30

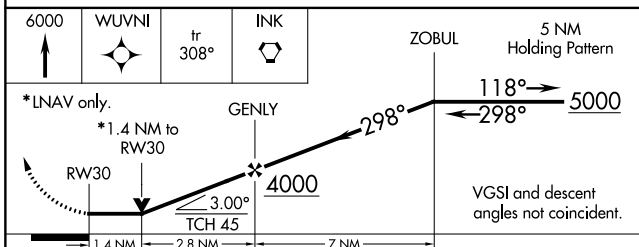
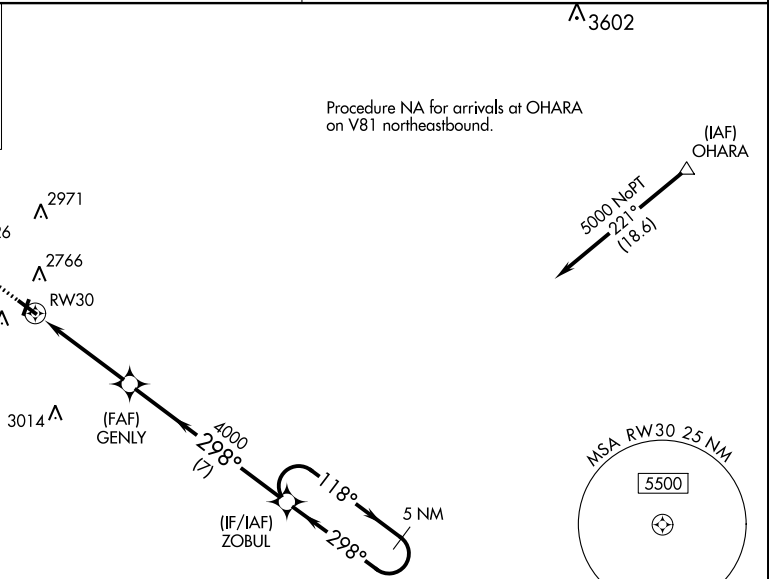
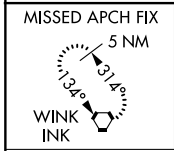
ROY HURD MEML (E01)

⚠ DME/DME RNP-0.3 NA. VDP NA with Wink altimeter setting.
⚠ Obtain local altimeter setting on CTAF, when not received, use Wink altimeter setting. Night landing; Rwy 12 NA.
 Helicopter visibility reduction below 3/4 SM NA.

MISSED APPROACH: Climb to 6000 direct WUVNI and on track 308 to INK VORTAC and hold.

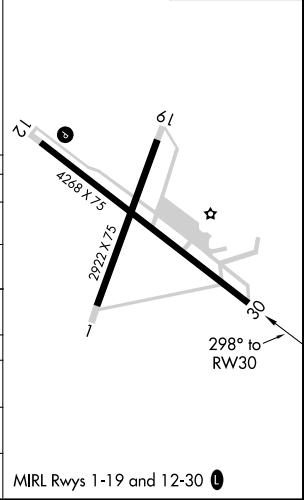
FORT WORTH CENTER
133.1 298.95

UNICOM
122.8 (CTAF)



| | |
|-----------|-----------|
| ELEV 2615 | TDZE 2613 |
|-----------|-----------|

| CATEGORY | A | B | C | D |
|---------------------------------|--------|-------------|--|----|
| LP MDA | 3080-1 | 467 (500-1) | 3080-1 ³ / ₈ 467 (500-1 ³ / ₈) | NA |
| RNAV MDA | 3100-1 | 487 (500-1) | 3100-1 ³ / ₈ 487 (500-1 ³ / ₈) | NA |
| CIRCLING | 3280-1 | 665 (700-1) | 3280-1 ³ / ₄ 665 (700-1 ³ / ₄) | NA |
| WINK ALTIMETER SETTING MINIMUMS | | | | |
| LP MDA | 3160-1 | 547 (600-1) | 3160-1 ³ / ₈ 547 (600-1 ³ / ₈) | NA |
| RNAV MDA | 3180-1 | 567 (600-1) | 3180-1 ³ / ₈ 567 (600-1 ³ / ₈) | NA |
| CIRCLING | 3360-1 | 745 (800-1) | 3360-2 ¹ / ₄ 745 (800-2 ¹ / ₄) | NA |



SC-3, 16 JUN 2022 to 14 JUL 2022

SC-3, 16 JUN 2022 to 14 JUL 2022