

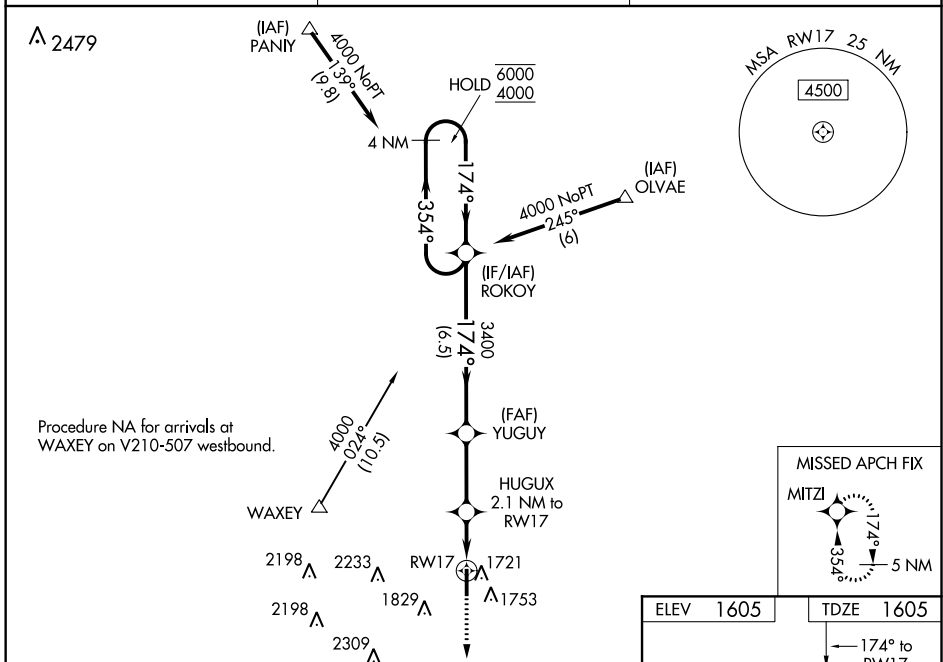
WAAS CH <b>82032</b> W17A	APP CRS <b>174°</b>	Rwy Idg TDZE Apt Elev	<b>5100</b> <b>1605</b> <b>1605</b>
---------------------------------	------------------------	-----------------------------	---

# RNAV (GPS) RWY 17

WEATHERFORD STAFFORD (OJA)

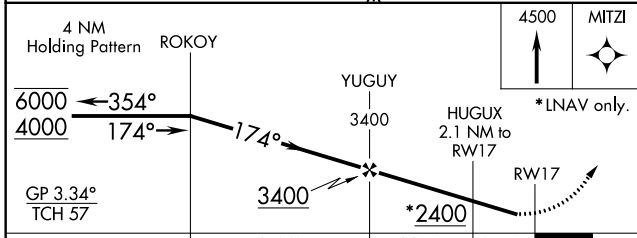
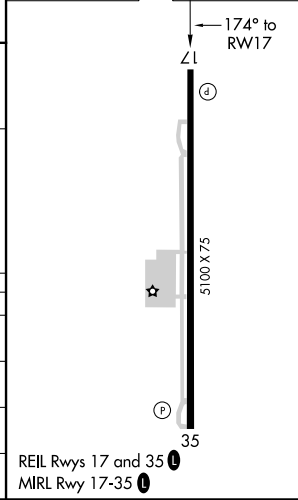
RNP APCH.	<p>▼ Rwy 17 helicopter visibility reduction below 1 SM NA. For uncompensated Baro-VNAV systems, LNAV/VNAV NA below -18°C or above 54°C. Straight-in Rwy 17 at night, Circling Rwy 35 at night, operational VGSI required, remain on or above the VGSI glidepath until threshold.</p>	MISSED APPROACH: Climb to 4500 direct MITZI and hold.
-----------	--	---

AWOS-3PT <b>118.575</b>	FORT WORTH CENTER <b>128.4 269.37</b>	UNICOM <b>122.8 (CTAF) 0</b>
----------------------------	--	---------------------------------



Procedure NA for arrivals at WAXEY on V210-507 westbound.

ELEV 1605	TDZE 1605
-----------	-----------



CATEGORY	A	B	C	D
LPV DA	1875-1	270 (300-1)		NA
LNAV/VNAV DA	1921-1	316 (400-1)		NA
LNAV MDA	2040-1	435 (500-1)	2040-1¼ 435 (500-1¼)	NA
<b>C</b> CIRCLING	2080-1 475 (500-1)	2140-1 535 (600-1)	2380-2¼ 775 (800-2¼)	NA

REIL Rwy 17 and 35 0  
MRL Rwy 17-35 0

SC-1, 16 JUN 2022 to 14 JUL 2022

SC-1, 16 JUN 2022 to 14 JUL 2022