

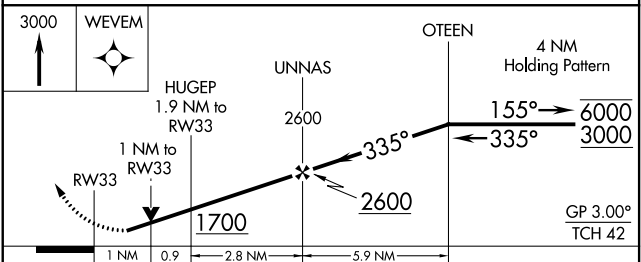
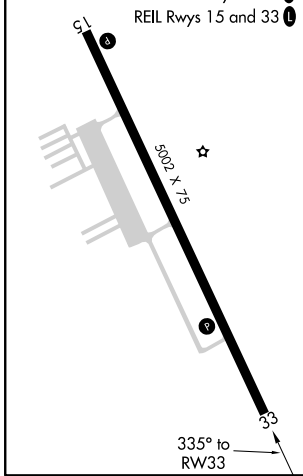
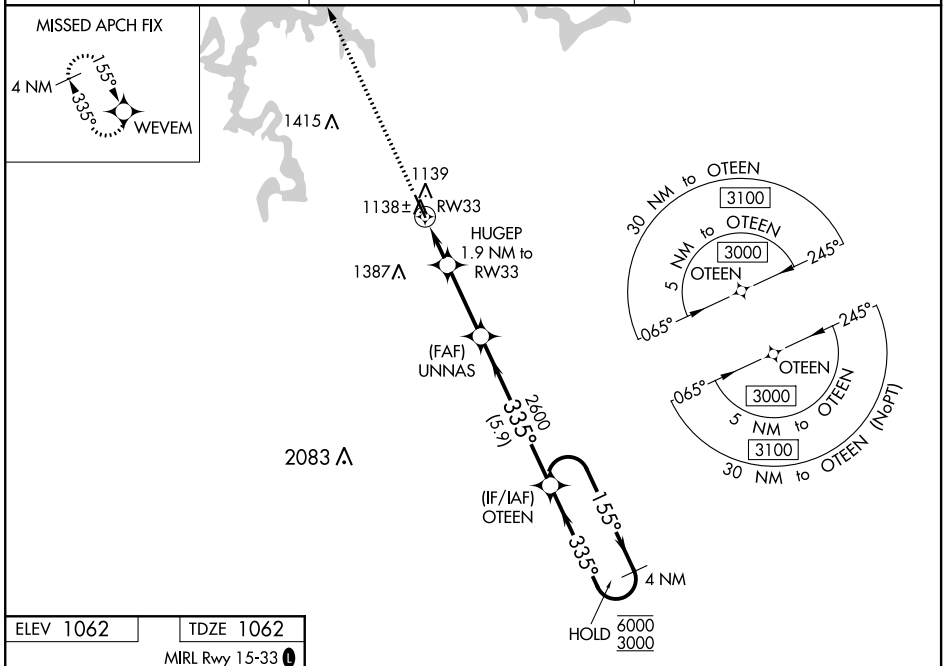
WAAS CH 97419 W33A	APP CRS 335°	Rwy Idg TDZE Apt Elev	5002 1062 1062
--	------------------------	-----------------------------	---

RNAV (GPS) RWY 33

CAMDENTON MEML-LAKE RGNL (OZS)

RNP APCH - GPS.	MISSED APPROACH: Climb to 3000 direct WEVEM and hold.
<p>⚠ Rwy 33 helicopter visibility reduction below 3/4 SM NA. For uncompensated Baro-VNAV systems, LNAV/VNAV NA below -17°C or above 54°C.</p>	

AWOS-3 120.225	MIZZU APP CON 124.1 353.925	UNICOM 122.8 (CTAF) 0
--------------------------	---------------------------------------	---------------------------------



CATEGORY	A	B	C	D
LPV DA	1312-1 250 (300-1)			NA
LNAV/VNAV DA	1312-1 250 (300-1)			NA
LNAV MDA	1400-1 338 (400-1)			NA
C CIRCLING	1520-1	458 (500-1)	1700-1 3/4 638 (700-1 3/4)	NA

NC-3, 16 JUN 2022 to 14 JUL 2022

NC-3, 16 JUN 2022 to 14 JUL 2022