

APP CRS	Rwy Idg	2500
051°	TDZE	1209
	Apt Elev	1209

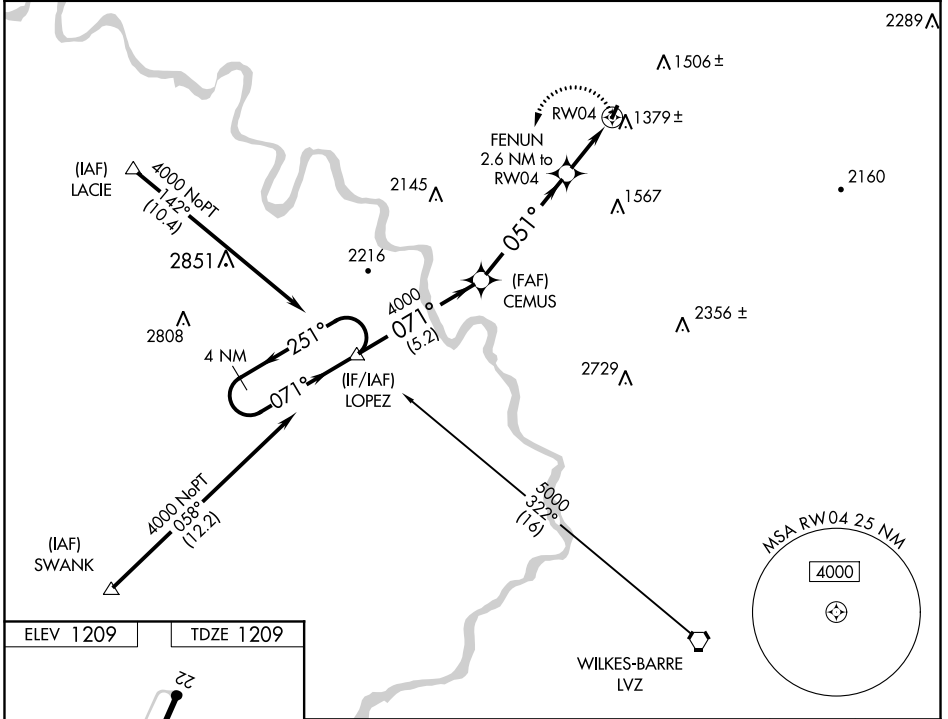
RNAV (GPS) RWY 4

SEAMANS FLD (9N3)

▼ DME/DME RNP-0.3 NA.
 Obtain local altimeter setting on CTAF; when not received, use Wilkes-Barre/Scranton Intl altimeter setting.
▲ NA
✳-22°C VDP NA when using Wilkes-Barre/Scranton Intl altimeter setting.

MISSED APPROACH: Climbing left turn to 4000 direct LOPEZ and hold.

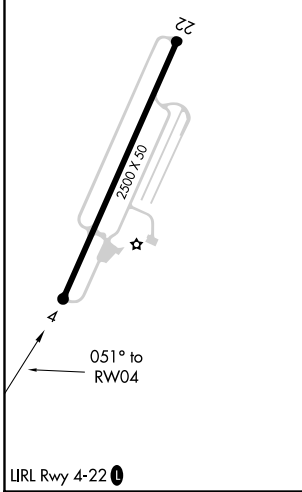
WILKES-BARRE APP CON 120.95 256.7	UNICOM 122.7 (CTAF) 0
---	---------------------------------



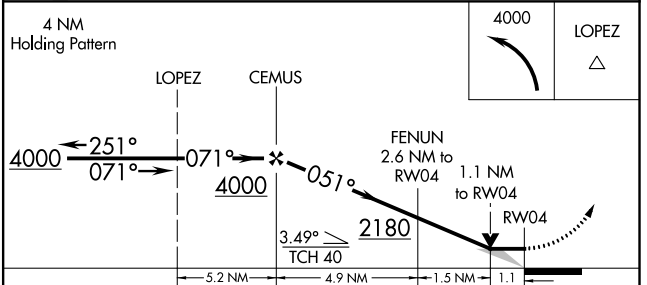
NE-4, 16 JUN 2022 to 14 JUL 2022

NE-4, 16 JUN 2022 to 14 JUL 2022

ELEV 1209	TDZE 1209
-----------	-----------



LURL Rwy 4-22 0



CATEGORY	A	B	C	D
LNAV MDA	1640-1	431 (500-1)		NA
CIRCLING	1720-1	511 (600-1)		NA
WILKES-BARRE/SCRANTON INTL ALTIMETER SETTING MINIMUMS				
LNAV MDA	1720-1	511 (600-1)		NA
CIRCLING	1800-1	591 (600-1)		NA