

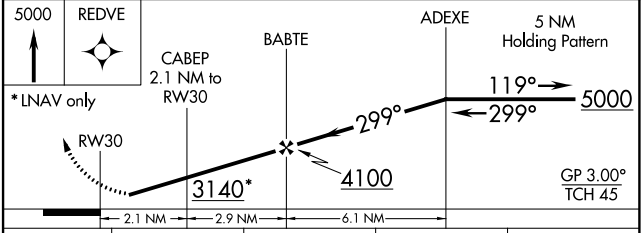
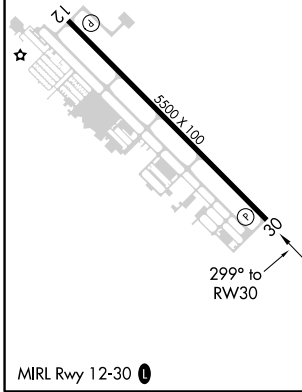
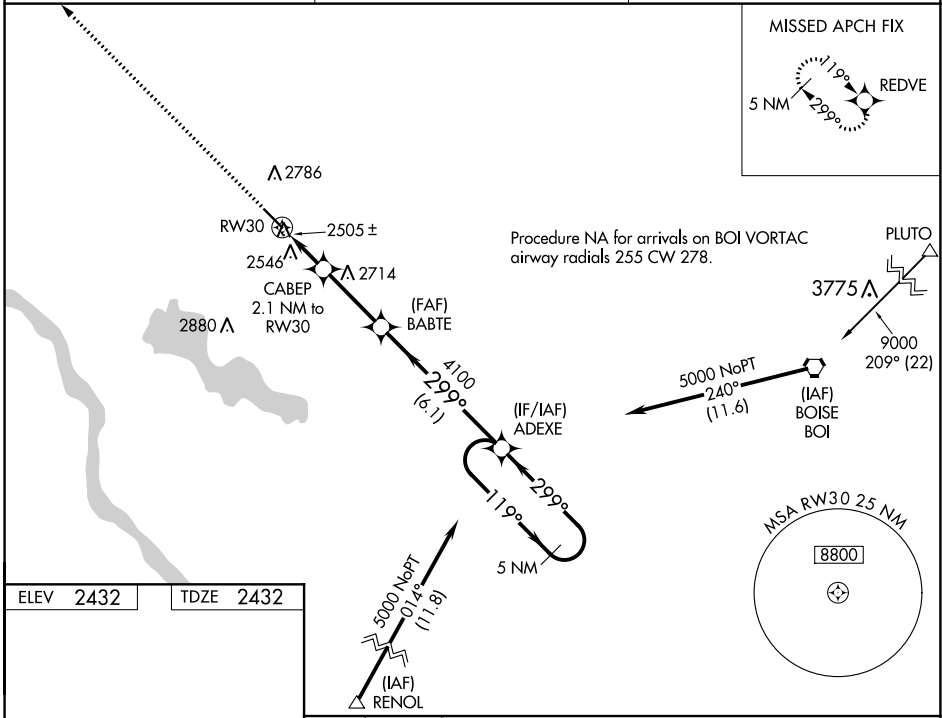
WAAS CH <b>73007</b> <b>W30A</b>	APP CRS <b>299°</b>	Rwy Idg TDZE Apt Elev	<b>5500</b> <b>2432</b> <b>2432</b>
--	------------------------	-----------------------------	---

# RNAV (GPS) RWY 30

TREASURE VALLEY EXEC AT CALDWELL (EUL)

RNP APCH.	<p><b>▽</b> Rwy 30 helicopter visibility reduction below 3/4 SM NA. Baro-VNAV NA when using Boise altimeter setting. For uncompensated Baro-VNAV systems, LNAV/VNAV NA below -19°C or above 44°C. When local altimeter setting not received, use Boise altimeter setting and increase all DA/MDA 120 feet and all visibilities 1/2 mile.</p>	<p>MISSED APPROACH: Climb to 5000 direct REDVE and hold.</p>
AWOS-3PT <b>135.075</b>		

AWOS-3PT <b>135.075</b>	BIG SKY APP CON <b>119.6 269.4</b>	UNICOM <b>123.0 (CTAF) 0</b>
----------------------------	---------------------------------------	---------------------------------



CATEGORY	A	B	C	D
LPV DA	2687-1 255 (300-1)			
LNAV/VNAV DA	2822-1 1/4 390 (400-1 1/4)			
LNAV MDA	2880-1 448 (500-1)	2880-1 3/8 448 (500-1 3/8)		2880-1 1/2 448 (500-1 1/2)

NW-1, 16 JUN 2022 to 14 JUL 2022

NW-1, 16 JUN 2022 to 14 JUL 2022