

VOR/DME SHB 112.0 Chan 57	APP CRS 287°	Rwy Idg TDZE Apt Elev N/A N/A 732
---	------------------------	---

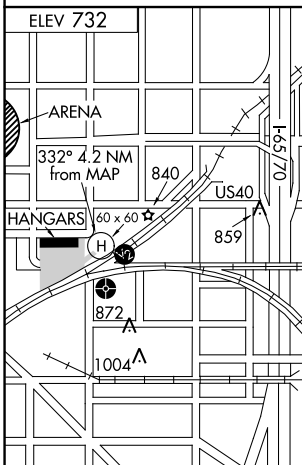
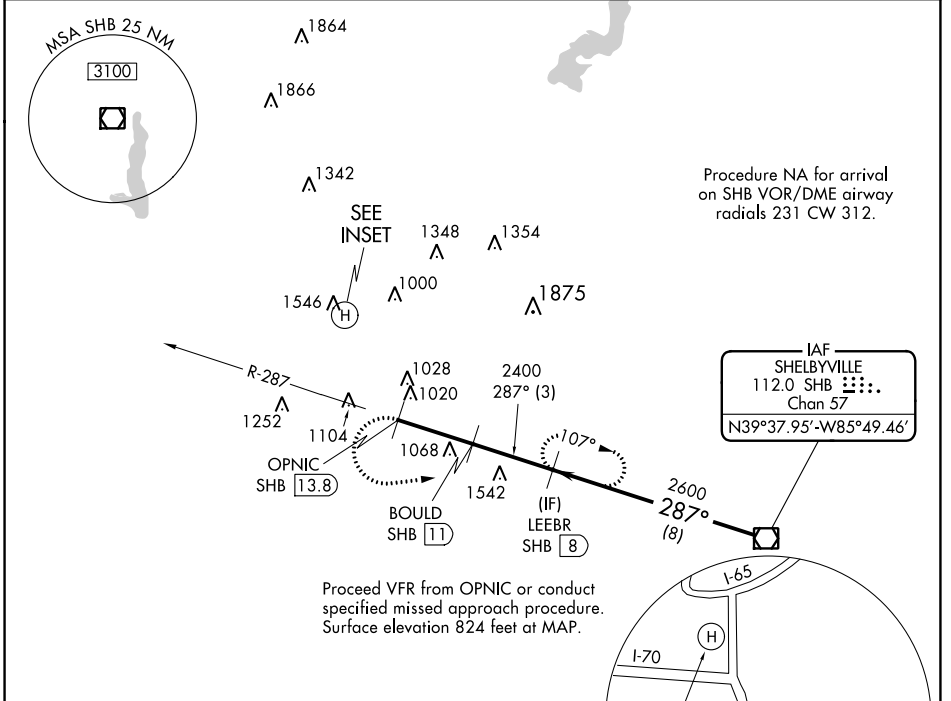
COPTER VOR/DME 287°

INDIANAPOLIS DOWNTOWN (8A.4)

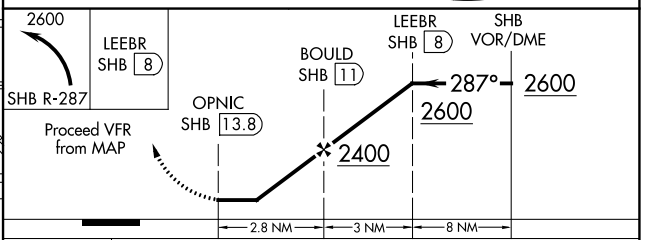
▲ NA When local altimeter setting not received, use Indianapolis Intl altimeter setting and increase MDA 40 feet. **ACTIVATE High Intensity Pad Lights-CTAF.**

MISSED APPROACH: Climbing left turn to 2600 via SHB R-287 to LEEBR/SHB 8 DME and hold.

AWOS-3 135.525	INDIANAPOLIS APP CON 125.275 317.8	UNICOM 123.05 (CTAF) 0
--------------------------	--	----------------------------------



CAUTION: Heliport located in area of numerous lighted and unlighted obstructions.



CATEGORY	COPTER	
H-287°	1340-¾	1340 (1400-¾)

EC-2, 16 JUN 2022 to 14 JUL 2022

EC-2, 16 JUN 2022 to 14 JUL 2022