

# KUSSO ONE DEPARTURE (RNAV)

SC-2, 16 JUN 2022 to 14 JUL 2022

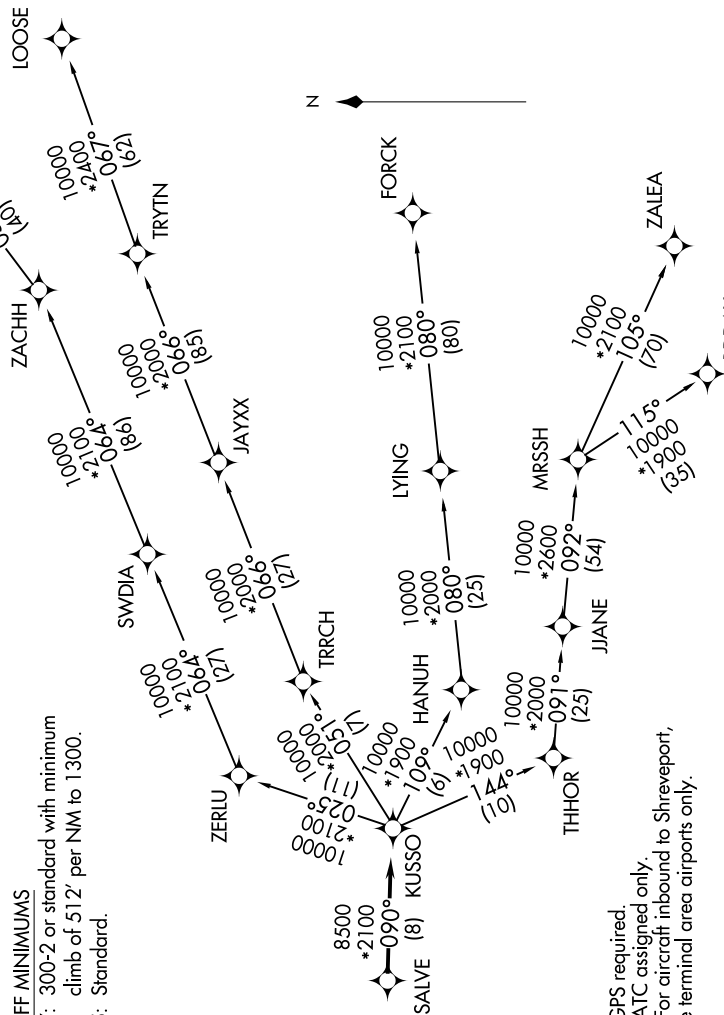
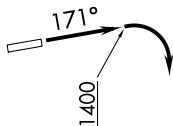
**TOP ALTITUDE:  
ASSIGNED BY ATC**

CTAF  
123.0  
REGIONAL DEP CON  
135.975 379.9

### TAKEOFF MINIMUMS

Rwy 17: 300-2 or standard with minimum climb of 512' per NM to 1300.

Rwy 35: Standard.



- NOTE: RADAR required.
- NOTE: RNAV 1.
- NOTE: DME/DME/IRU or GPS required.
- NOTE: BDDAY Transition: ATC assigned only.
- NOTE: MRSSH Transition: For aircraft inbound to Shreveport, Jackson and Monroe terminal area airports only.

(NARRATIVE ON FOLLOWING PAGE)

NOTE: Chart not to scale.

SC-2, 16 JUN 2022 to 14 JUL 2022

# KUSSO ONE DEPARTURE (RNAV)