

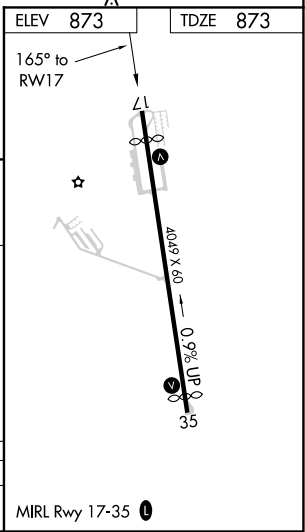
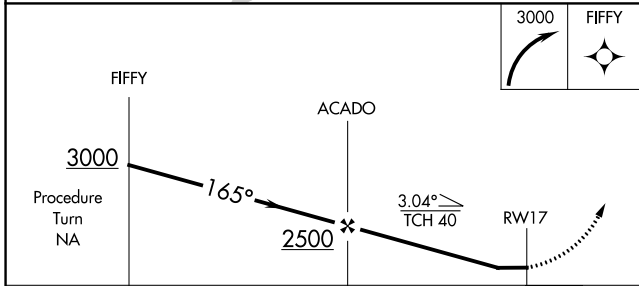
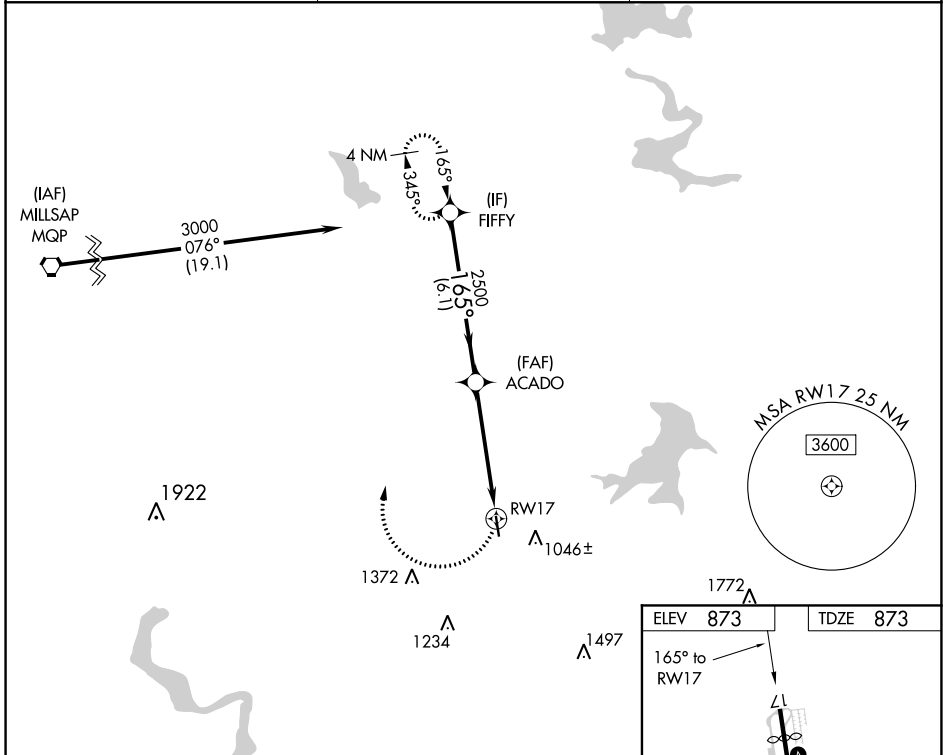
APP CRS	Rwy Idg	<b>3657</b>
<b>165°</b>	TDZE	<b>873</b>
	Apt Elev	<b>873</b>

# RNAV (GPS) RWY 17

BOURLAND FLD (50F)

RNP APCH.	Rwy 17 helicopter visibility reduction below 1 SM NA. Use Cleburne altimeter setting, when not received, use Fort Worth Meacham Intl altimeter setting and increase all MDA 40 feet, increase LNAV Cat C visibility 1/2 SM. Procedure NA at night.	MISSED APPROACH: Climbing right turn to 3000 direct FIFFY and hold.
⚠ NA		

CPT AWOS-3 <b>119.525</b>	REGIONAL APP CON <b>135.975 379.9</b>	UNICOM <b>123.0 (CTAF) 0</b>
------------------------------	--	---------------------------------



CATEGORY	A	B	C	D
LNAV MDA	1520-1	647 (700-1)	1520-1 <sup>3</sup> / <sub>4</sub> 647 (700-1 <sup>3</sup> / <sub>4</sub> )	NA

SC-2, 16 JUN 2022 to 14 JUL 2022

SC-2, 16 JUN 2022 to 14 JUL 2022