

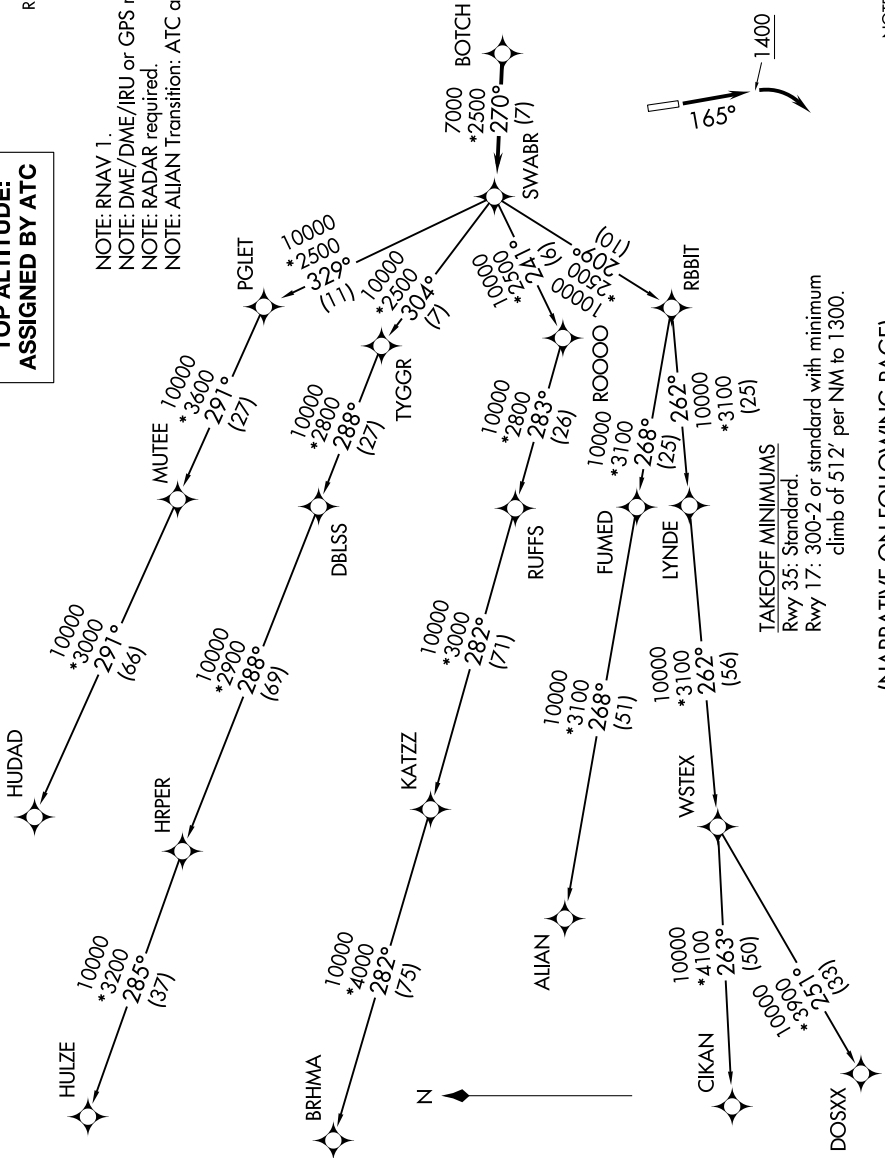
# SWABR ONE DEPARTURE (RNAV)

SC-2, 16 JUN 2022 to 14 JUL 2022

CTAF  
1230  
REGIONAL DEP CON  
135.975 379.9

## TOP ALTITUDE: ASSIGNED BY ATC

NOTE: RNAV 1.  
NOTE: DME/DME/IRU or GPS required.  
NOTE: RADAR required.  
NOTE: ALIAN Transition: ATC assigned only.



TAKEOFF MINIMUMS  
Rwy 35: Standard.  
Rwy 17: 300-2 or standard with minimum  
climb of 512' per NM to 1300.

(NARRATIVE ON FOLLOWING PAGE)

NOTE: Chart not to scale.

SC-2, 16 JUN 2022 to 14 JUL 2022

# SWABR ONE DEPARTURE (RNAV)