

# RNAV (GPS) RWY 35

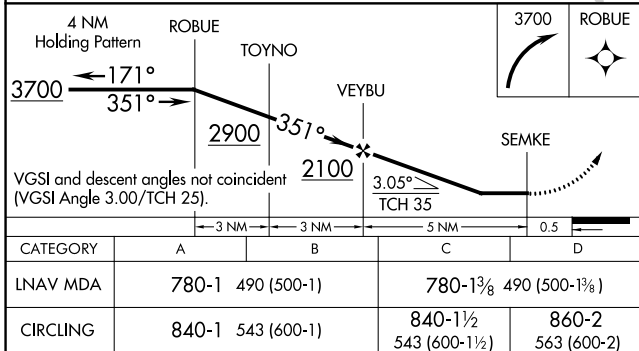
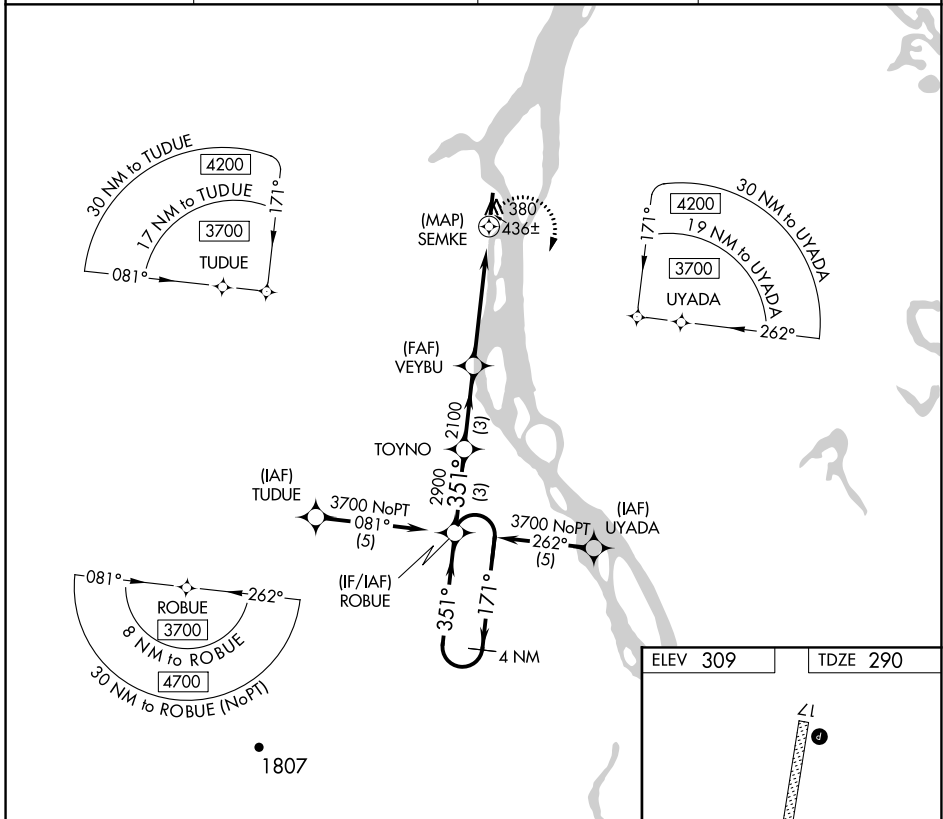
ANVIK (ANV)(PANV)

APP CRS <b>351°</b>	Rwy Idg <b>4000</b>
	TDZE <b>290</b>
	Apt Elev <b>309</b>

**⚠** DME/DME RNP-0.3 NA. When local altimeter setting not received, use Holy Cross altimeter setting and increase all MDAs 120 feet and LNAV visibility Cat C/D 3/8 mile, and Circling visibility Cat D 1/2 mile.

**MISSED APPROACH:** Climbing right turn to 3700 direct ROBUE and hold, continue climb-in-hold to 3700.

AWOS-3P <b>133.55</b>	ANCHORAGE CENTER <b>135.7 335.5</b>	KENAI RADIO <b>122.4</b>	UNICOM <b>122.7 (CTAF) 0</b>
--------------------------	----------------------------------------	-----------------------------	---------------------------------



ELEV 309	TDZE 290
----------	----------

CATEGORY	A	B	C	D
LNAV MDA	780-1	490 (500-1)	780-1 3/8	490 (500-1 3/8)
CIRCLING	840-1	543 (600-1)	840-1 1/2	860-2
			543 (600-1 1/2)	563 (600-2)

MIRL Rwy 17-35 0  
REIL Rwy 17 and 35 0

AK, 19 MAY 2022 to 14 JUL 2022

AK, 19 MAY 2022 to 14 JUL 2022