

VOR/DME MFE 117.2 Chan 119	APP CRS 080°	Rwy Idg TDZE Apt Elev 70	N/A N/A 70
--	------------------------	---------------------------------------	-------------------------

VOR-A

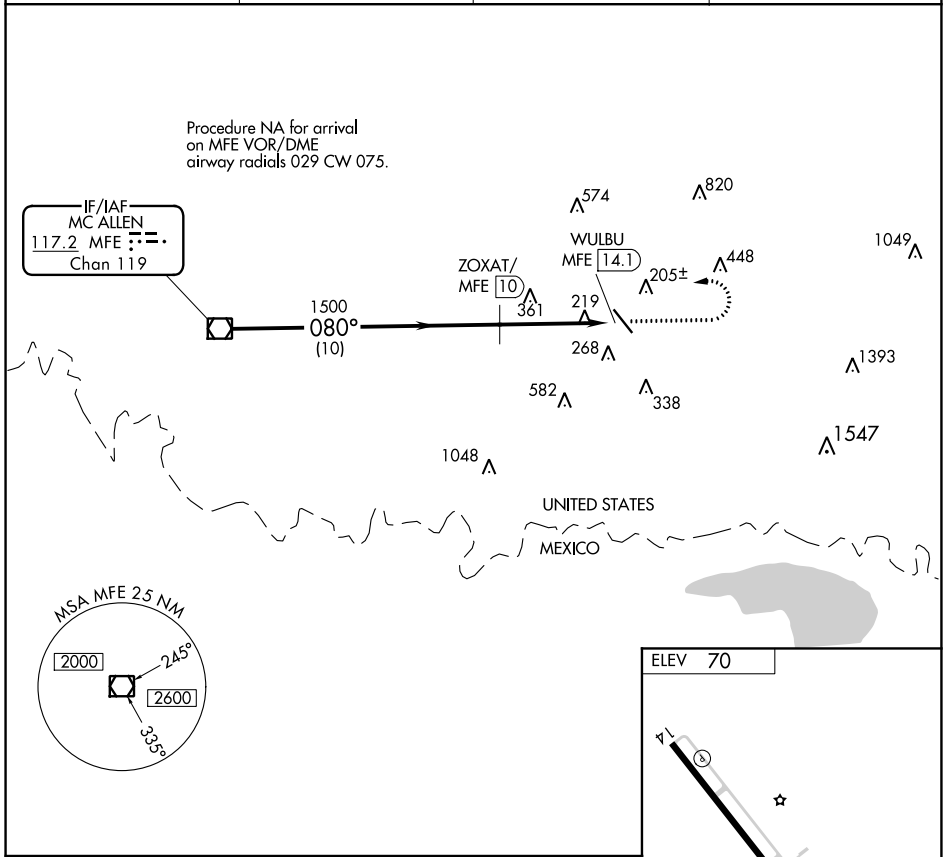
MID VALLEY (TXW)

DME required.

▼ When local altimeter not received, use McAllen altimeter setting and increase all MDA 40 feet.

MISSED APPROACH: Climb to 1000 then climbing left turn to 2000 direct MFE VOR/DME.

AWOS-3PT 118.575	VALLEY APP CON 121.0 284.7	CLNC DEL 125.95	UNICOM 122.8 (CTAF)
----------------------------	--------------------------------------	---------------------------	-------------------------------



SC-3, 16 JUN 2022 to 14 JUL 2022

SC-3, 16 JUN 2022 to 14 JUL 2022

