

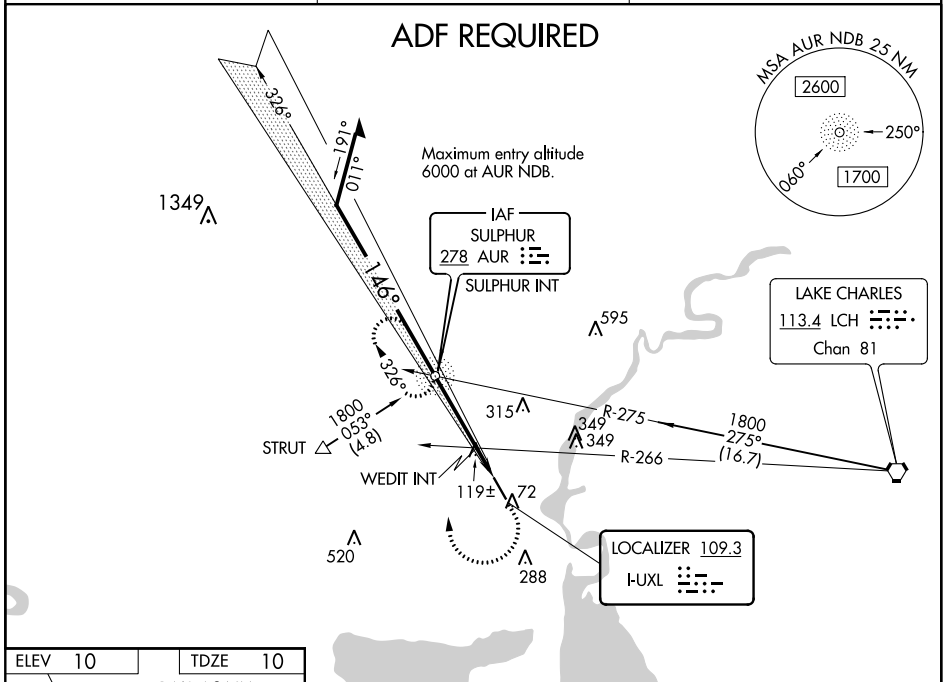
LOC I-XL 109.3	APP CRS 146°	Rwy Idg 5001 TDZE 10 Apt Elev 10
--------------------------	------------------------	---

LOC RWY 15
SOUTHLAND FLD (UXL)

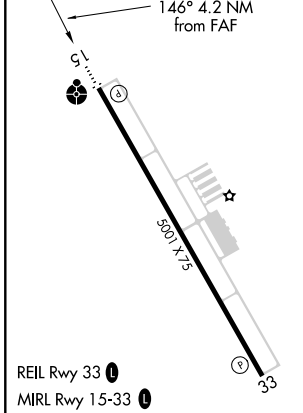
⚠ Inoperative table does not apply to S-15 Cat C. Visibility reduction by helicopters NA. When local altimeter setting not received, use Lake Charles Rgnl altimeter setting and increase all MDA 20 feet and Circling visibility Cat C/D ¼ SM.

ODALS MISSED APPROACH: Climb to 500 then climbing right turn to 2400 direct AUR NDB and hold, continue climb-in-hold to 2400.

AWOS-3PT 118.175	LAKE CHARLES APP CON * 119.35 282.3	UNICOM 122.8 (CTAF) 0
----------------------------	---	---------------------------------



ELEV 10	TDZE 10
---------	---------



* 500 when using Lake Charles Rgnl altimeter setting.

Remain within 10 NM

1800 → 326° → AUR NDB/INT (500) → 2400 → AUR

1800 → 146° → WEDIT INT (1500) → 3.25° TCH 40 → *480

VGSI and descent angles not coincident (VGSI Angle 3.00/TCH 50).

3 NM → 1.2 NM →

CATEGORY	A	B	C	D
S-15	480-¾	470 (500-¾)	480-1¼ 470 (500-1¼)	480-1½ 470 (500-1½)
CIRCLING	480-1 470 (500-1)	520-1 510 (600-1)	680-1¾ 670 (700-1¾)	680-2 670 (800-2)
WEDIT FIX MINIMUMS				
S-15	380-¾ 370 (400-¾)			380-1¼ 370 (400-1¼)
CIRCLING	420-1 410 (500-1)	520-1 510 (600-1)	680-1¾ 670 (700-1¾)	680-2 670 (700-2)

FAF to MAP 4.2 NM					
Knots	60	90	120	150	180
Min:Sec	4:12	2:48	2:06	1:41	1:24

SC-4, 16 JUN 2022 to 14 JUL 2022

SC-4, 16 JUN 2022 to 14 JUL 2022