

WAAS CH 86711 W15A	APP CRS 146°	Rwy Idg TDZE Apt Elev	5001 10 10
--	------------------------	-----------------------------	---------------------------------------

RNAV (GPS) RWY 15

SOUTHLAND FLD (U XL)

RNP APCH-GPS

⚠ Inoperative table does not apply to LNAV/VNAV. Baro-VNAV NA when using Lake Charles Rgnl altimeter setting. For uncompensated Baro-VNAV systems, LNAV/VNAV NA below -15°C or above 48°C. Rwy 15 helicopter visibility reduction below 3/4 SM NA. When local altimeter setting not received, use Lake Charles Rgnl altimeter setting and increase LPV DA to 438 feet and all visibilities 1/4 SM; increase LNAV/VNAV DA to 438 feet; increase all MDAs 20 feet and Circling visibility Cat C/D 1/4 SM. VDP NA when using Lake Charles Rgnl altimeter setting.

ODALS

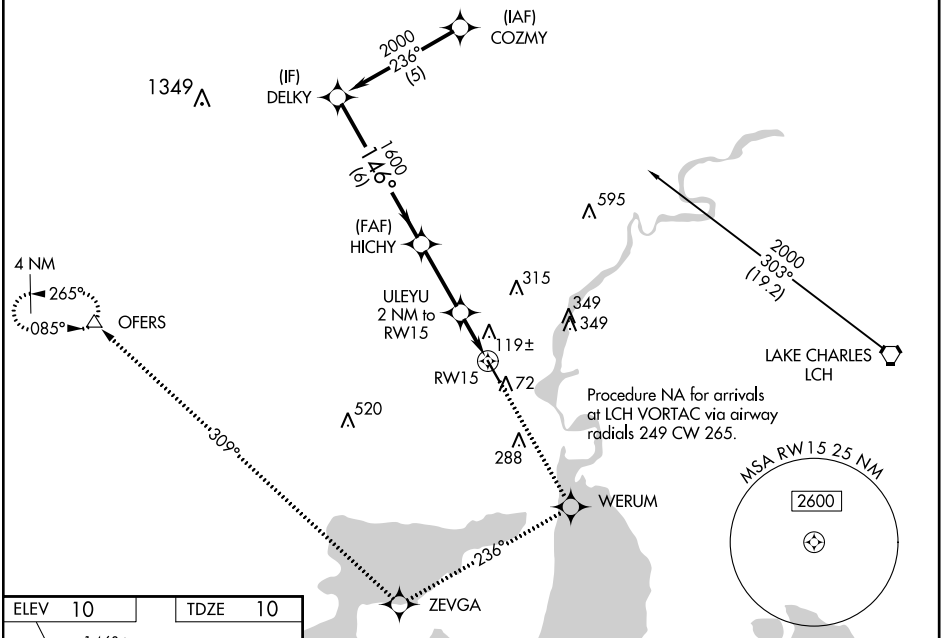


MISSED APPROACH: Climb to 2500 direct WERUM and via 236° track to ZEVGA and via 309° track to OFERS and hold.

AWOS-3PT
118.175

LAKE CHARLES APP CON *
119.35 282.3

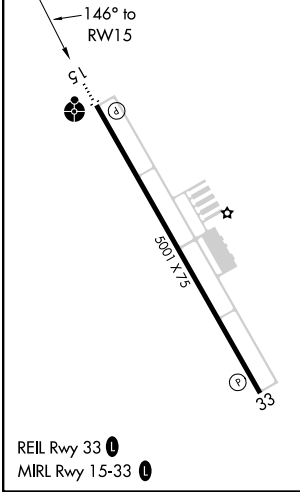
UNICOM
122.8 (CTAF) 0



SC-4, 16 JUN 2022 to 14 JUL 2022

SC-4, 16 JUN 2022 to 14 JUL 2022

ELEV 10	TDZE 10
---------	---------



Procedure Turn NA	2500 WERUM	tr 236° ZEVGA	tr 309° OFERS	
DELKY	HICHY	ULEYU 2 NM to RW15	*LNAV only	
2000	146°	*1.1 NM to RW15		
GP 3.00° TCH 40	1600	*680		
VGSIs and RNAV glidepath not coincident (VGSIs Angle 3.00/TCH 50).				
6 NM 2.8 NM 0.9 NM 1.1 NM				
CATEGORY	A	B	C	D
LPV DA		309-1	299 (300-1)	
LNAV/VNAV DA		419-1½	409 (500-1½)	
LNAV MDA		380-¾	370 (400-¾)	380-1¼ 370 (400-1¼)
CIRCLING	420-1 410 (500-1)	520-1 510 (600-1)	680-1¾ 670 (700-1¾)	680-2 670 (700-2)