

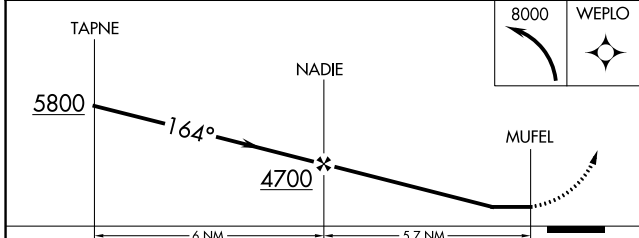
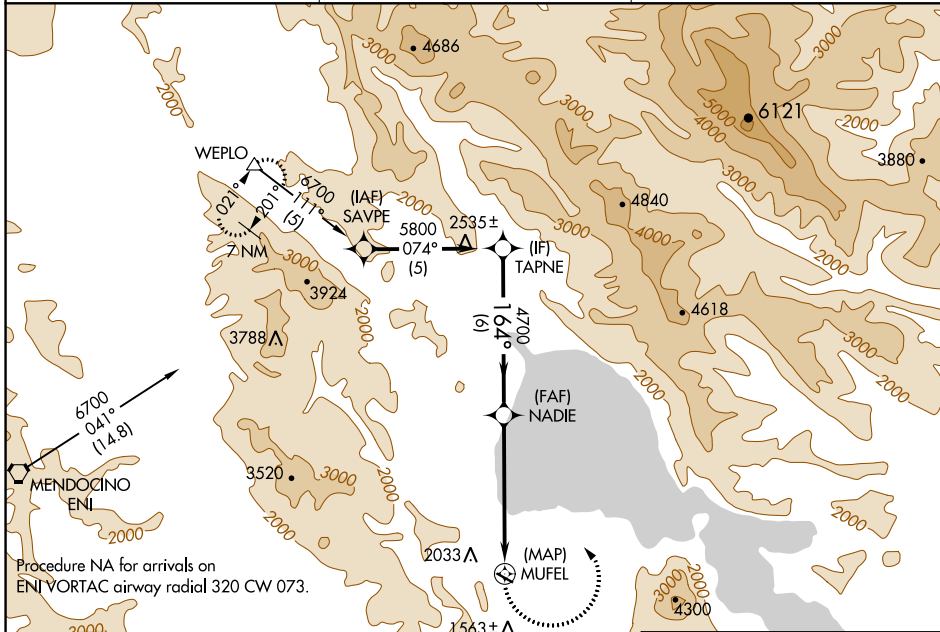
APP CRS 164°	Rwy Idg TDZE Apt Elev	N/A N/A 1380
------------------------	-----------------------------	---

RNAV (GPS)-A

LAMPSON FLD (102)

<p>NA Circling NA south of Rwy 10-28. DME/DME RNP-0.3 NA. Procedure NA at night. When local altimeter setting not received, use Ukiah altimeter setting and increase all MDA 560 feet.</p>	<p>MISSED APPROACH: Climbing left turn to 8000 direct WEPLO and hold.</p>
---	--

AWOS-3 118.35	OAKLAND CENTER 127.8 353.5	UNICOM 122.8 (CTAF) 0
-------------------------	--------------------------------------	---------------------------------



CATEGORY	A	B	C	D
CIRCLING	2580-1¼ 1200 (1200-1¼)	2580-1½ 1200 (1200-1½)		NA

ELEV 1380

164° to MUFEL

3600 X 60

0.3% UP

WEPLO

MUFEL

MIRL Rwy 10-28 0

SW-2, 16 JUN 2022 to 14 JUL 2022

SW-2, 16 JUN 2022 to 14 JUL 2022