

WAAS CH 53623 W18A	APP CRS 179°	Rwy Idg TDZE Apt Elev	4001 1115 1115
----------------------------------------	------------------------	-----------------------------	-------------------------------------------

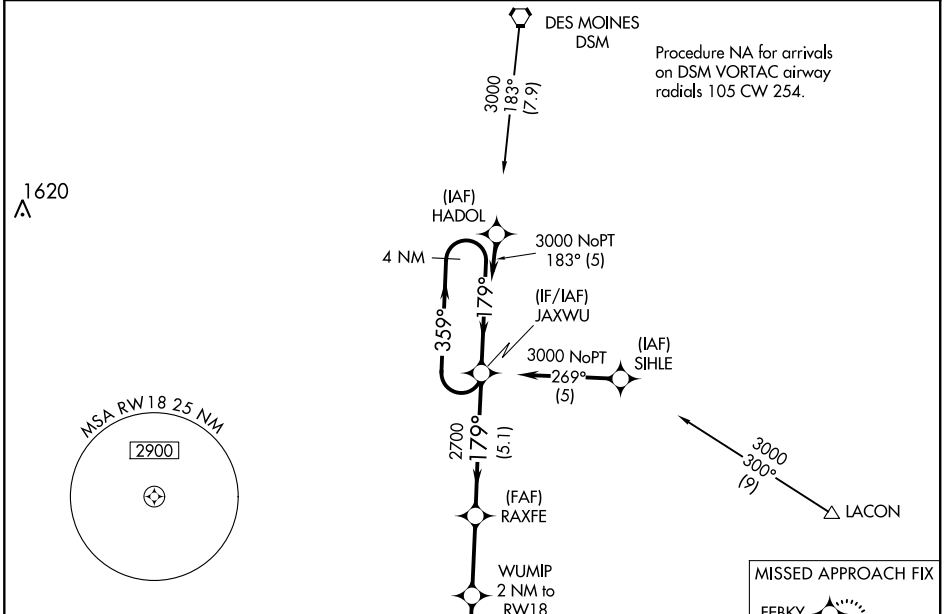
RNAV (GPS) RWY 18

OSCEOLA MUNI (I75)

⚠ Baro-VNAV NA when using Chariton altimeter setting. For uncompensated Baro-VNAV systems, LNAV/VNAV NA below -17°C (2°F) or above 54°C (130°F). When VGSi inop, Straight-In/Circling Rwy 18 procedure NA at night. DME/DME RNP-0.3 NA. Visibility reduction by helicopters NA. When local altimeter setting not received, use Chariton altimeter setting and increase all DA 44 feet and all MDA 60 feet.

⚠ MISSED APPROACH: Climb to 3000 direct FEBKY and hold.

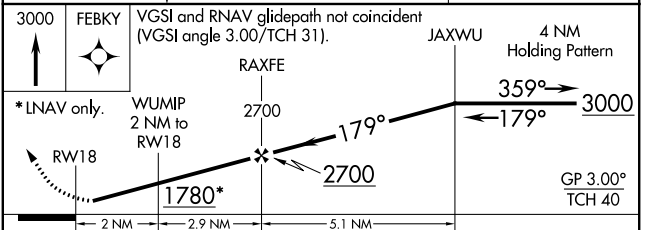
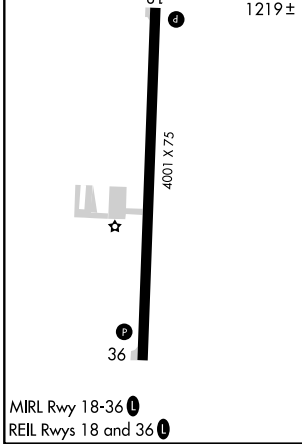
AWOS-3 120.975	DES MOINES APP CON 135.2 360.7	UNICOM 122.8 (CTAF) 0
--------------------------	------------------------------------------	---------------------------------



NC-3, 16 JUN 2022 to 14 JUL 2022

NC-3, 16 JUN 2022 to 14 JUL 2022

ELEV 1115	TDZE 1115
-----------	-----------



CATEGORY	A	B	C	D
LPV DA	1365-1	250 (300-1)		NA
LNAV/VNAV DA	1365-1	250 (300-1)		NA
LNAV MDA	1460-1	345 (400-1)		NA
CIRCLING	1580-1	465 (500-1)		NA