

|             |          |             |
|-------------|----------|-------------|
| APP CRS     | Rwy Idg  | <b>2697</b> |
| <b>140°</b> | TDZE     | <b>762</b>  |
|             | Apt Elev | <b>773</b>  |

# RNAV (GPS) RWY 14

EPHRAIM/GIBRALTAR (3D2)

RNP APCH:

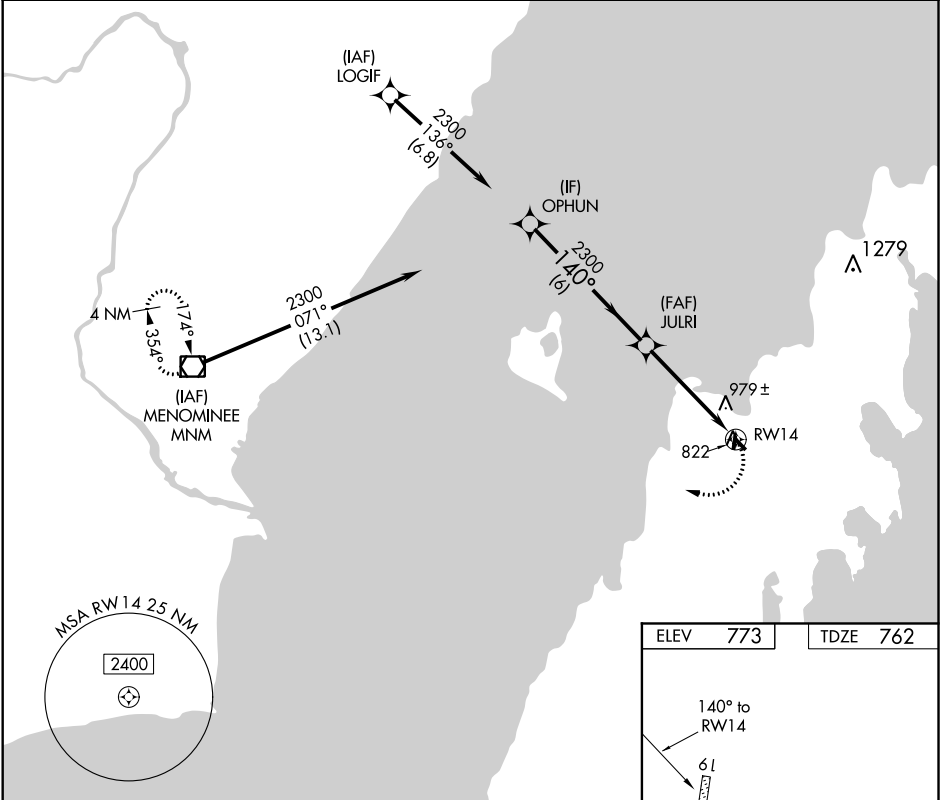
- Rwy 14 helicopter visibility reduction below 3/4 SM NA. Use Door County Cherryland altimeter setting; when not received, use Menominee altimeter setting and increase all MDA 20 feet.
- NA

MISSED APPROACH: Climbing right turn to 3000 direct MNM VOR/DME and hold.

AWOS-3PT  
**124.175**

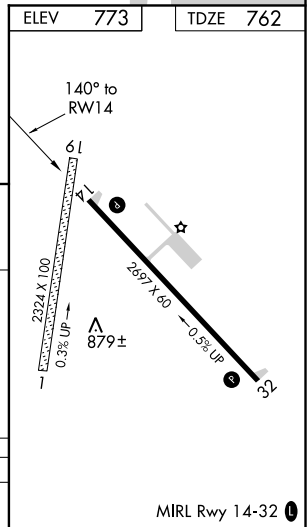
GREEN BAY APP CON★  
**120.3 338.2**

UNICOM  
**123.0 (CTAF) 0**



EC-3, 16 JUN 2022 to 14 JUL 2022

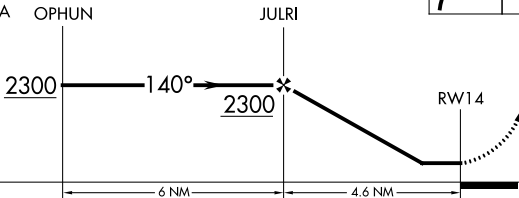
EC-3, 16 JUN 2022 to 14 JUL 2022



Visual Segment - Obstacles.

|      |     |
|------|-----|
| 3000 | MNM |
|      |     |

Procedure  
Turn  
NA



| CATEGORY | A      | B           | C                       | D  |
|----------|--------|-------------|-------------------------|----|
| LNAV MDA | 1300-1 | 538 (600-1) | 1300-1½<br>538 (600-1½) | NA |