

APP CRS	Rwy Idg	5101
076°	TDZE	3305
	Apt Elev	3313

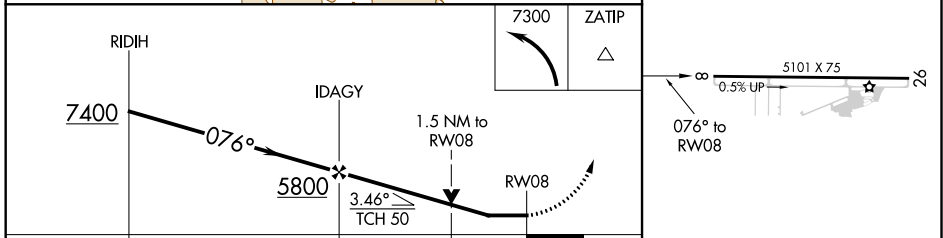
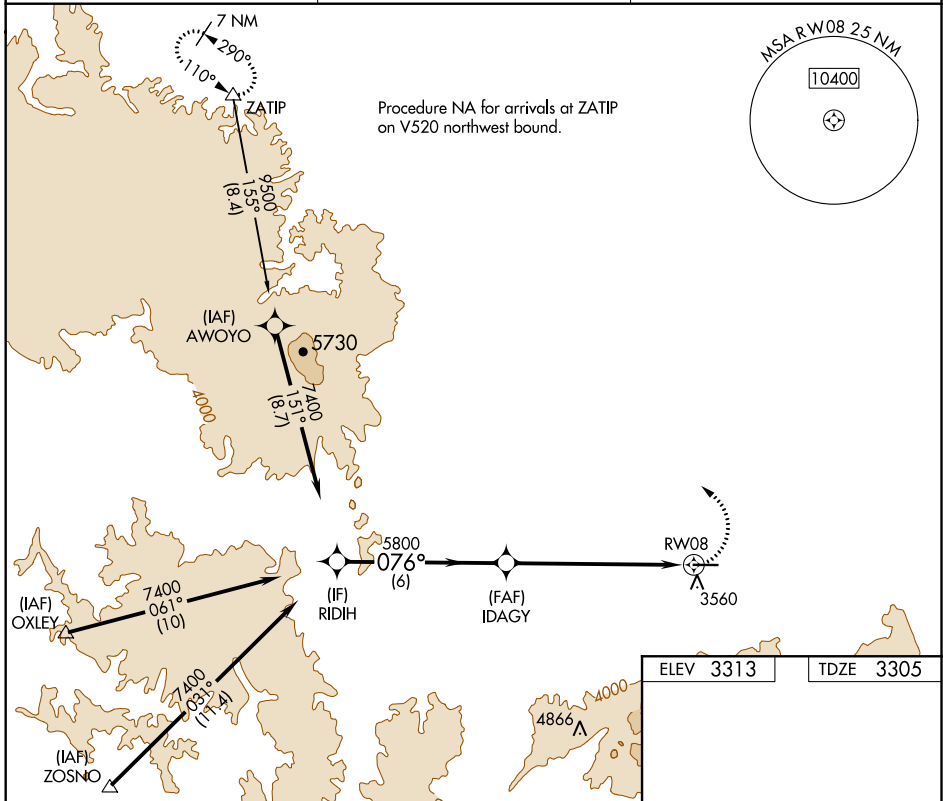
RNAV (GPS) RWY 8

IDAHO COUNTY (GIC)

⚠ Circling NA south of Rwy 8-26. Rwy 8 Helicopter visibility reduction below ¾ SM NA. DME/DME RNP-0.3 NA.

⚠ MISSED APPROACH: Climbing left turn to 7300 direct ZATIP and hold.

AWOS-3 118.175	SEATTLE CENTER 123.95 290.55	CTAF 122.8 0
--------------------------	--	------------------------



CATEGORY	A	B	C	D
LNVA MDA	3900-1	595 (600-1)	3900-1¾	595 (600-1¾)
C CIRCLING	3900-1	587 (600-1)	3900-1¾ 587 (600-1¾)	3900-2 587 (600-2)

MIRL Rwy 8-26
REIL Rwy 8 **0**

NW-1, 16 JUN 2022 to 14 JUL 2022

NW-1, 16 JUN 2022 to 14 JUL 2022