

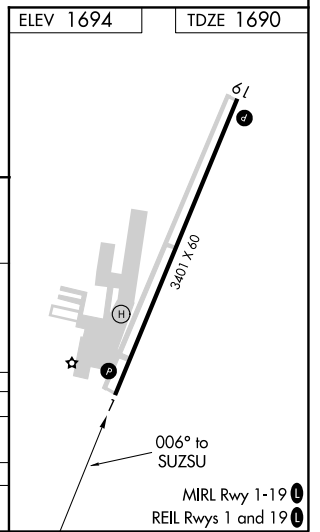
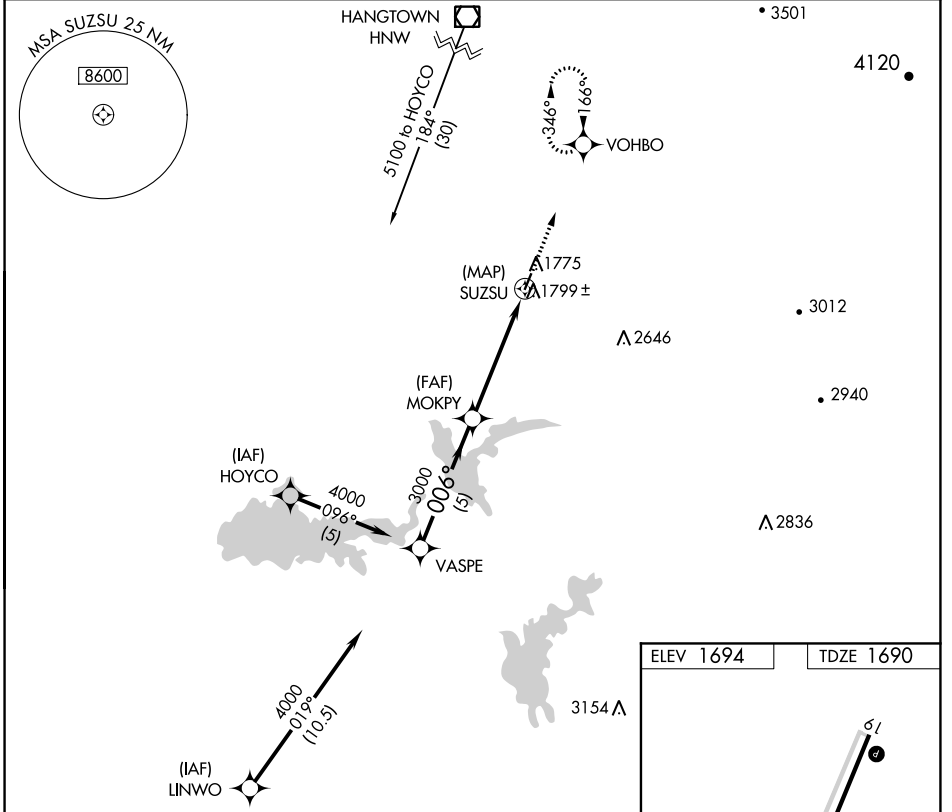
APP CRS	Rwy Idg	3401
006°	TDZE	1690
	Apt Elev	1694

GPS RWY 1

WESTOVER FLD AMADOR COUNTY (JAQ)

<p>▽ When local altimeter setting not received, use Sacramento Exec altimeter setting.</p> <p>△NA</p>	<p>MISSED APPROACH: Climb to 4500 on 006° course to VOHBO and hold.</p>
---	---

<p>AWOS-3</p> <p>121.125</p>	<p>NORCAL APP CON</p> <p>125.1 363.2</p>	<p>UNICOM</p> <p>123.075 (CTAF) 0</p>
-------------------------------------	---	--



Procedure Turn NA	VASPE	MOKPY	SUZSU	VOHBO
	4000	3000	4500	006° crs
	5 NM		5 NM	
CATEGORY	A	B	C	D
S-1	2060-1	370 (400-1)	NA	NA
SACRAMENTO EXEC ALTIMETER SETTING MINIMUMS				
S-1	2380-1	690 (700-1)	NA	NA

SW-2, 16 JUN 2022 to 14 JUL 2022

SW-2, 16 JUN 2022 to 14 JUL 2022