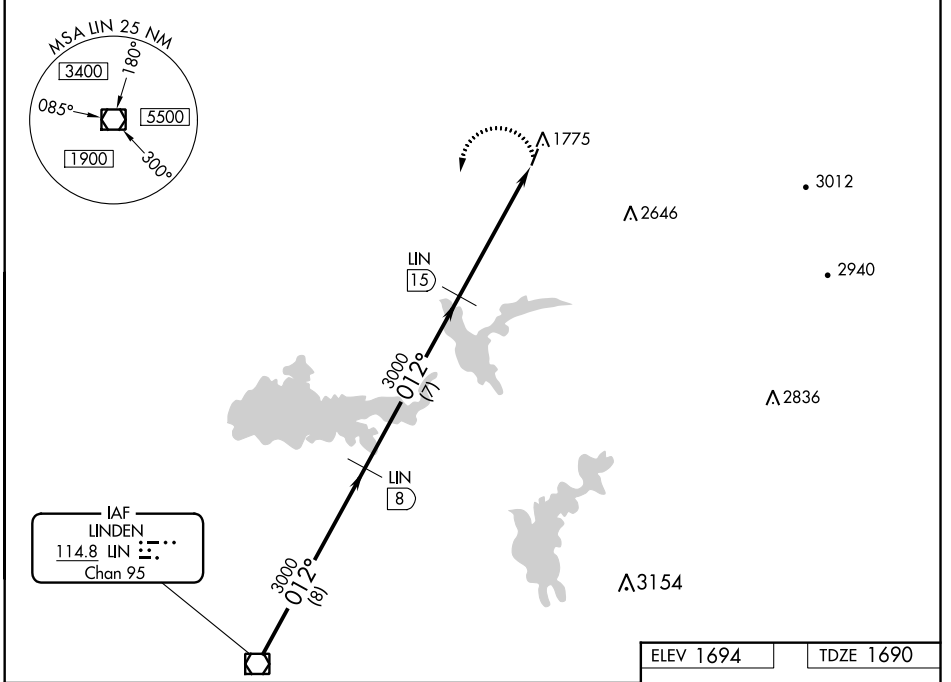


| | | |
|---|------------------------|---|
| VOR/DME LIN 114.8 Chan 95 | APP CRS 012° | Rwy Idg TDZE 1690 Apt Elev 1694 |
|---|------------------------|---|

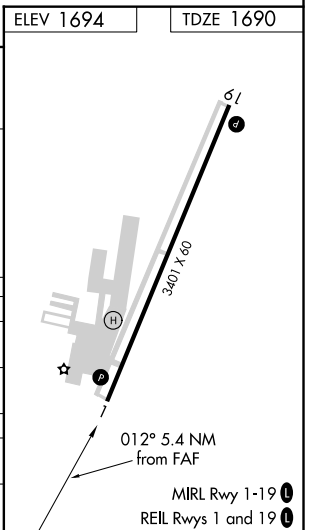
VOR/DME RWY 1
WESTOVER FLD AMADOR COUNTY (JAQ)

NA If local altimeter not received, use Sacramento Exec altimeter setting. Circling Rwy 19 NA at night. **MISSED APPROACH:** Climbing left turn to 3000 via LIN R-012 to LIN VOR/DME.

| | | |
|--------------------------|--------------------------------------|--|
| AWOS-3 121.125 | NORCAL APP CON 125.1 363.2 | UNICOM 123.075 (CTAF) 0 |
|--------------------------|--------------------------------------|--|



| | | | | |
|--|-----------------------|-------------------------|--------|----------|
| | LIN VOR/DME | LIN 8 | LIN 15 | LIN 20.4 |
| | 3000 | 3000 | 3000 | |
| Procedure Turn NA | 8 NM | 7 NM | 5.4 NM | |
| CATEGORY | A | B | C | D |
| S-1 | 2080-1 390 (400-1) | 2080-1¼ 390 (400-1¼) | | NA |
| CIRCLING | 2200-1 506 (600-1) | 2200-1¼ 506 (600-1¼) | | NA |
| SACRAMENTO EXEC ALTIMETER SETTING MINIMUMS | | | | |
| S-1 | 2380-1 690 (700-1) | 2380-1¼ 690 (700-1¼) | | NA |
| CIRCLING | 2520-1 826 (900-1) | 2520-1¼ 826 (900-1¼) | | NA |



SW-2, 16 JUN 2022 to 14 JUL 2022

SW-2, 16 JUN 2022 to 14 JUL 2022