

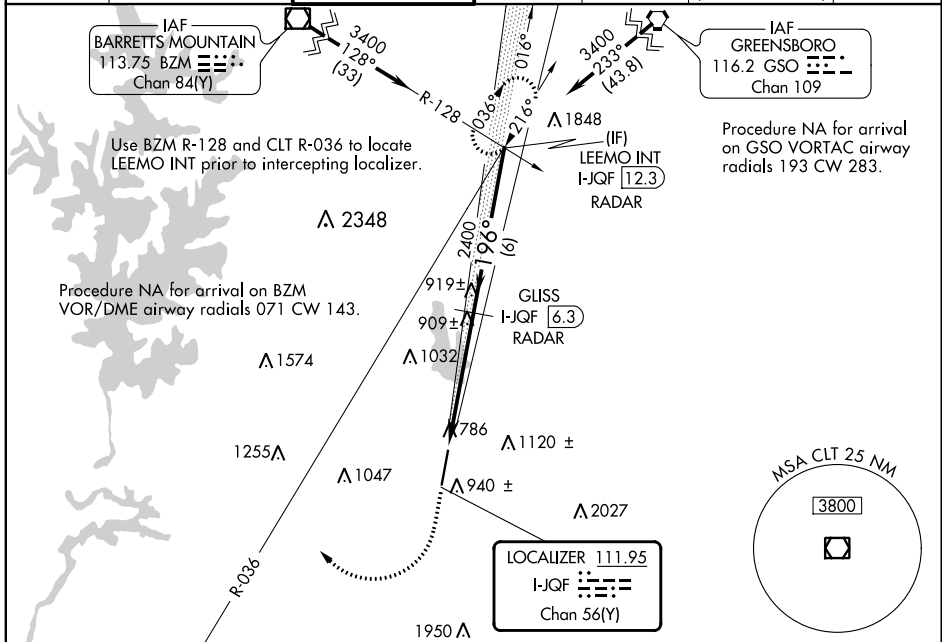
LOC/DME I-JQF 111.95 Chan 56(Y)	APP CRS 196°	Rwy Idg 6350 TDZE 705 Apt Elev 705
---	------------------------	---

ILS or LOC RWY 20

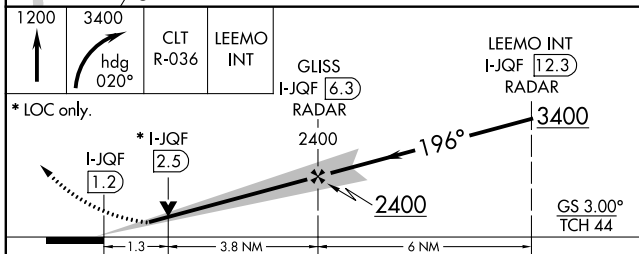
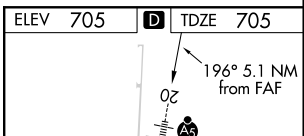
CONCORD-PADGETT RGNL (JQF)

DME or RADAR required for LOC only.		MALSR	MISSED APPROACH: Climb to 1200 then climbing right turn to 3400 on heading 020° and CLT VOR/DME R-036 to LEEMO INT/I-JQF 12.3 DME/RADAR and hold.
⚠ For inop ALS, increase S-LOC 20 Cat D visibility to 1 3/8 SM. ⚠ NA			

ATIS ★ 133.675	CHARLOTTE APP CON 128.32 307.8	CONCORD TOWER ★ 134.65 (CTAF) 0	GND CON 121.85	CLNC DEL 118.55	CLNC DEL 127.25 (when twr closed)	UNICOM 122.95
--------------------------	--	---	--------------------------	---------------------------	--	-------------------------



ELEV 705	TDZE 705
----------	----------



CATEGORY	A	B	C	D
S-ILS 20	905-1/2 200 (200-1/2)			
S-LOC 20	1160-1/2 455 (500-1/2)	1160-7/8 455 (500-7/8)	1160-1 455 (500-1)	
CIRCLING	1300-1 595 (600-1)	1480-2 775 (800-2 1/4)	1480-2 1/2 775 (800-2 1/2)	

FAF to MAP 5.1 NM					
Knots	60	90	120	150	180
Min:Sec	5:06	3:24	2:33	2:02	1:42

SE-2, 16 JUN 2022 to 14 JUL 2022

SE-2, 16 JUN 2022 to 14 JUL 2022