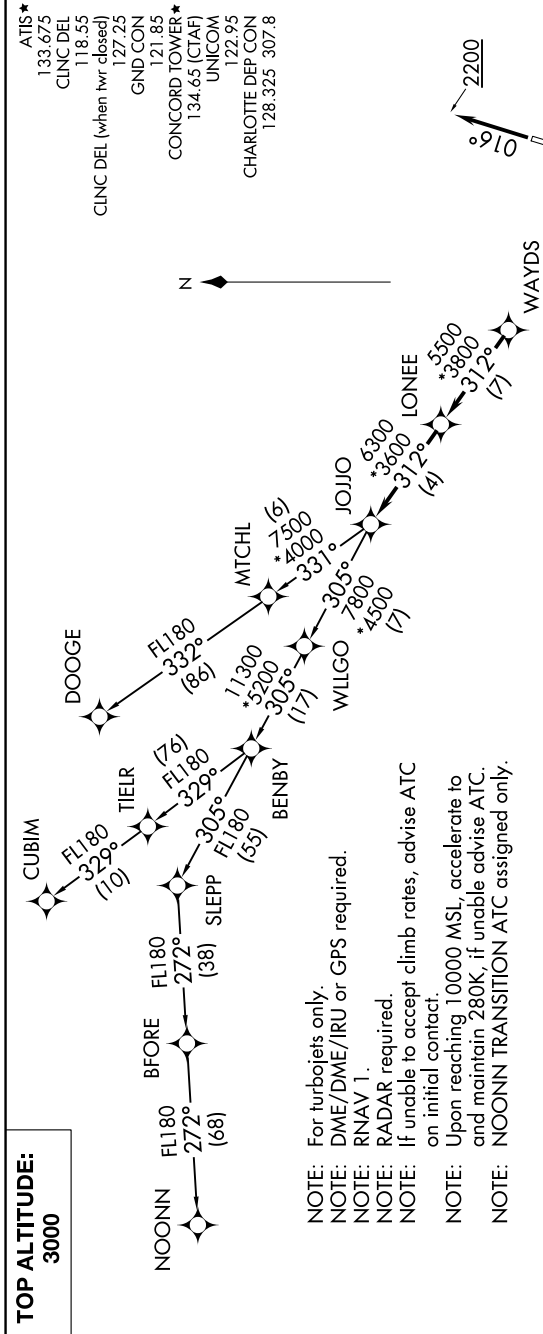


# JOJO FOUR DEPARTURE (RNAV)

SE-2, 16 JUN 2022 to 14 JUL 2022



**TOP ALTITUDE:**  
3000

- NOTE: For turbojets only.
- NOTE: DME/DME/IRU or GPS required.
- NOTE: RNAV 1.
- NOTE: RADAR required.
- NOTE: If unable to accept climb rates, advise ATC on initial contact.
- NOTE: Upon reaching 10000 MSL, accelerate to and maintain 280K, if unable advise ATC.
- NOTE: NOONN TRANSITION ATC assigned only.

## DEPARTURE ROUTE DESCRIPTION

TAKEOFF RWY 2: Climb heading 016° to 2200, thence, . . . .  
 TAKEOFF RWY 20: Climbing left turn heading 150° to 2400, thence, . . . .  
 . . . . on heading assigned by ATC, expect RADAR vectors to WAYDS, then on depicted route to JOJJO. Then on assigned transition. Maintain 3000, expect clearance to filed altitude within 10 minutes after departure.

- CUBIM TRANSITION (JOJO4.CUBIM)
- DOOGE TRANSITION (JOJO4.DOOGE)
- NOONN TRANSITION (JOJO4.NOONN)

**TAKEOFF MINIMUMS**  
 Rwy 2: Standard.  
 Rwy 20: Standard with minimum climb of 320' per NM to 2400.

NOTE: Chart not to scale.

# JOJO FOUR DEPARTURE (RNAV)

SE-2, 16 JUN 2022 to 14 JUL 2022