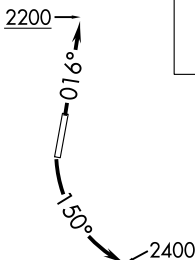


# KWEEN FOUR DEPARTURE (RNAV)

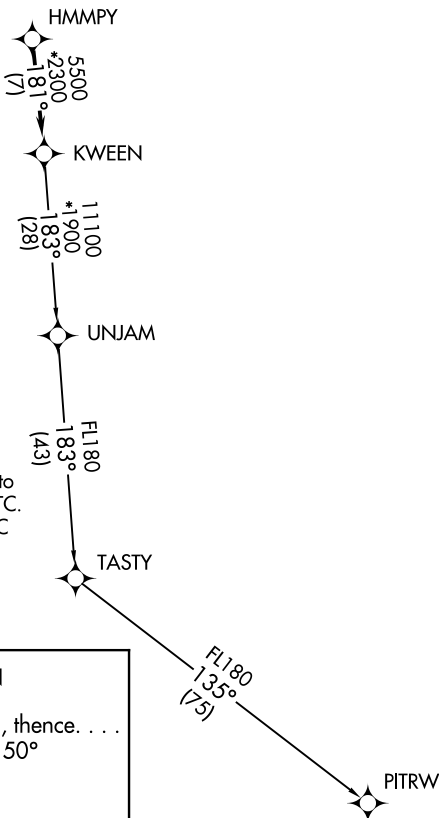
ATIS ★  
 133.675  
 CLNC DEL  
 118.55  
 CLNC DEL (when twr closed)  
 127.25  
 GND CON  
 121.85  
 CONCORD TOWER ★  
 134.65 (CTAF)  
 UNICOM  
 122.95  
 CHARLOTTE DEP CON  
 128.325 307.8



**TOP ALTITUDE:  
3000**

### TAKEOFF MINIMUMS

Rwy 2: Standard.  
 Rwy 20: Standard with minimum  
 climb of 320' per NM to 2400.



- NOTE: For turbojets only.
- NOTE: DME/DME/IRU or GPS required.
- NOTE: RNAV 1.
- NOTE: RADAR required.
- NOTE: If unable to accept climb rates, advise ATC on initial contact.
- NOTE: Upon reaching 10000 MSL, accelerate to and maintain 280K, if unable advise ATC.
- NOTE: Transponder code will be issued via PDC or Charlotte CLNC DEL.

NOTE: Chart not to scale.

**DEPARTURE ROUTE DESCRIPTION**

**TAKEOFF RWY 2:** Climb heading 016° to 2200, thence. . . .  
**TAKEOFF RWY 20:** Climbing left turn heading 150° to 2400, thence. . . .  
 . . . on heading assigned by ATC, expect RADAR vectors to HMMPY, then on track 181° to KWEEN, then on assigned transition, maintain 3000, expect filed altitude within 10 minutes after departure.

PITRW TRANSITION (KWEEN4.PITRW)  
UNJAM TRANSITION (KWEEN4.UNJAM)

SE-2, 16 JUN 2022 to 14 JUL 2022

SE-2, 16 JUN 2022 to 14 JUL 2022