

WAAS CH <b>56499</b> <b>W20A</b>	APP CRS <b>196°</b>	Rwy Idg TDZE Apt Elev	<b>6350</b> <b>705</b> <b>705</b>
--	------------------------	-----------------------------	---

# RNAV (GPS) RWY 20

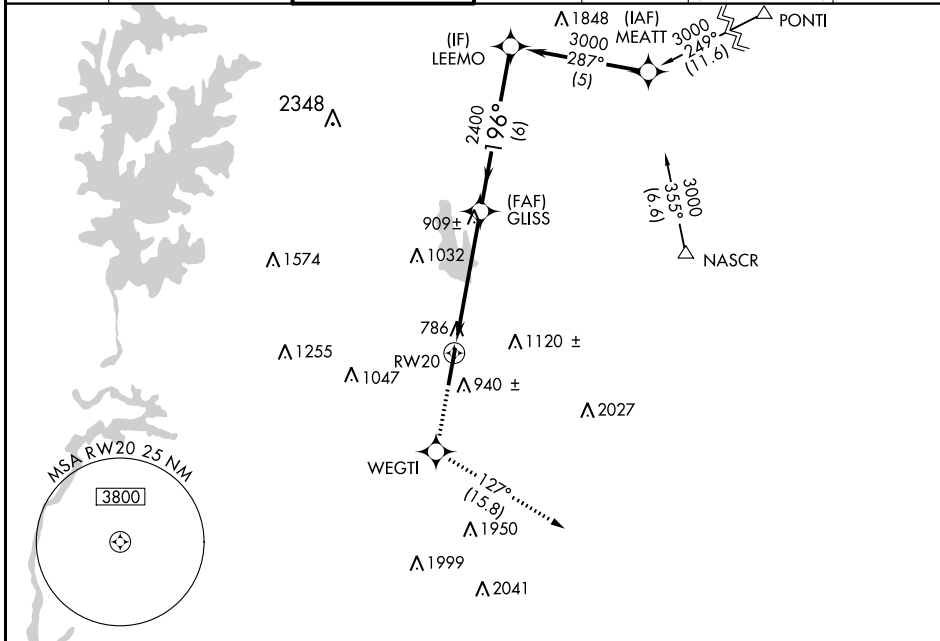
CONCORD-PADGETT RGNL (JQF)

RNP APCH.

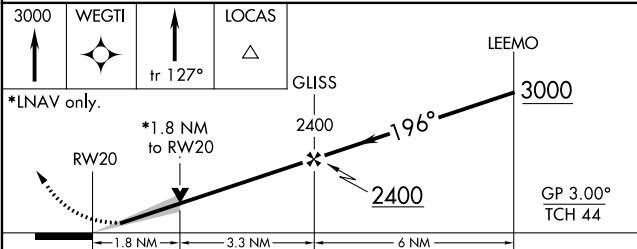
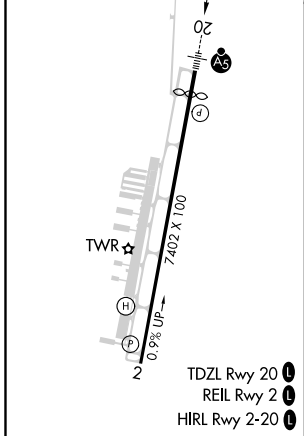
**V** For uncompensated Baro-VNAV systems, LNAV/VNAV NA below -16°C or above 54°C. For inop ALS, increase LNAV/VNAV visibility all Cats to 1½ SM.  
**A**

MALSR   
**MISSED APPROACH:** Climb to 3000 direct WEGTI and on track 127° to LOCAS and hold.

ATIS ★ <b>133.675</b>	CHARLOTTE APP CON <b>128.32 307.8</b>	CONCORD TOWER ★ <b>134.65 (CTAF) 0</b>	GND CON <b>121.85</b>	CLNC DEL <b>118.55</b>	CLNC DEL <b>127.25</b> (when twr closed)	UNICOM <b>122.95</b>
--------------------------	--	---	--------------------------	---------------------------	--	-------------------------



ELEV 705	<b>D</b>	TDZE 705
----------	----------	----------



CATEGORY	A	B	C	D
LPV DA		955-½	250 (300-½)	
LNAV/VNAV DA		1222-1¼	517 (600-1¼)	
LNAV MDA	1300-½	595 (600-½)	1300-1¼	595 (600-1¼)
<b>C</b> CIRCLING	1300-1	595 (600-1)	1480-2¼ 775 (800-2¼)	1480-2½ 775 (800-2½)

SE-2, 16 JUN 2022 to 14 JUL 2022

SE-2, 16 JUN 2022 to 14 JUL 2022