

WAAS CH 45914 W10A	APP CRS 096°	Rwy Idg TDZE Apt Elev	5001 112 112
--	------------------------	-----------------------------	---

RNAV (GPS) RWY 10

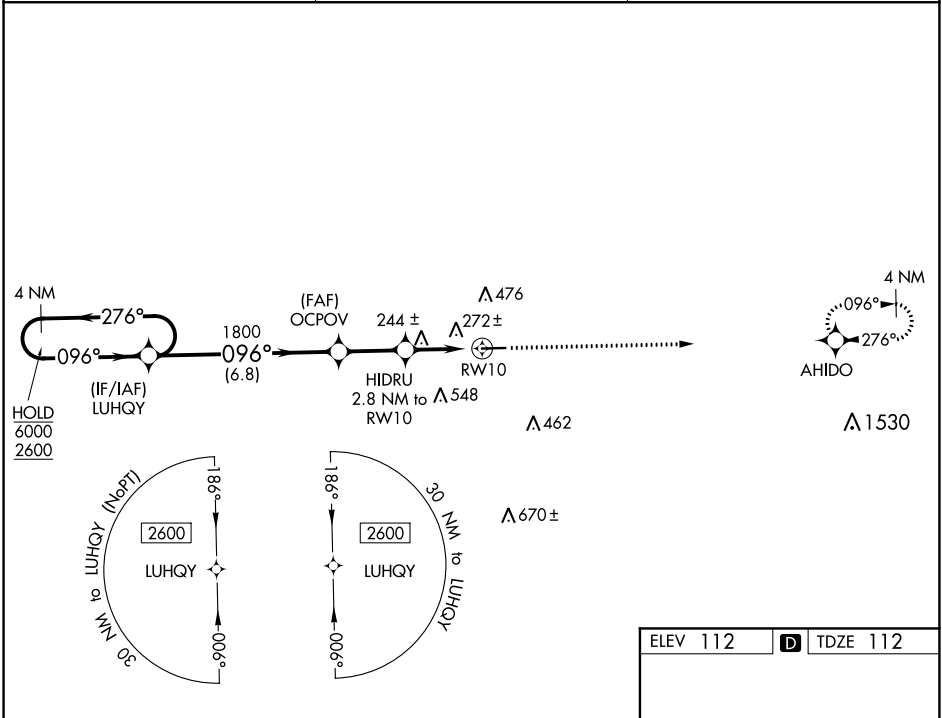
CLAXTON-EVANS COUNTY (C'WV)

RNP APCH GPS.

Straight-In Rwy 10 NA at night.
 Rwy 10 helicopter visibility reduction below 1 SM NA.

MISSED APPROACH: Climb to 2600 direct AHIDO and hold.

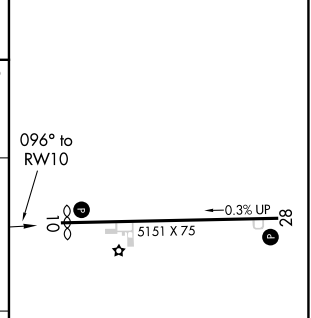
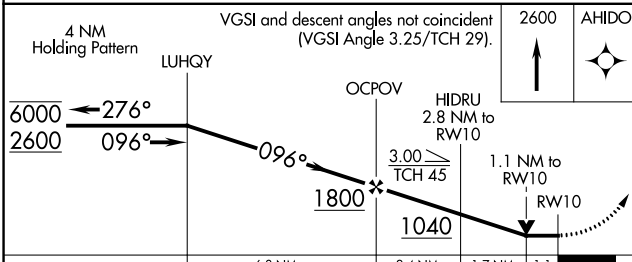
AWOS-3 120.075	JACKSONVILLE CENTER 132.925 363.2	UNICOM 122.8 (CTAF)
--------------------------	---	-------------------------------



SE-4, 16 JUN 2022 to 14 JUL 2022

SE-4, 16 JUN 2022 to 14 JUL 2022

ELEV 112		TDZE 112
----------	--	----------



CATEGORY	A	B	C	D
LP MDA	500-1	388 (400-1)	500-1 1/8	388 (400-1 1/8)
LNAV MDA	540-1	428 (500-1)	540-1 1/4	428 (500-1 1/4)
CIRCLING	580-1 468 (500-1)	780-1 668 (700-1)	860-2 1/4 748 (800-2 1/4)	860-2 1/2 748 (800-2 1/2)

MIRL Rwy 10-28
REIL Rwys 10 and 28