

WAAS CH 87114 W28A	APP CRS 276°	Rwy Idg TDZE Apt Elev	5151 110 112
--	------------------------	-----------------------------	---

RNAV (GPS) RWY 28

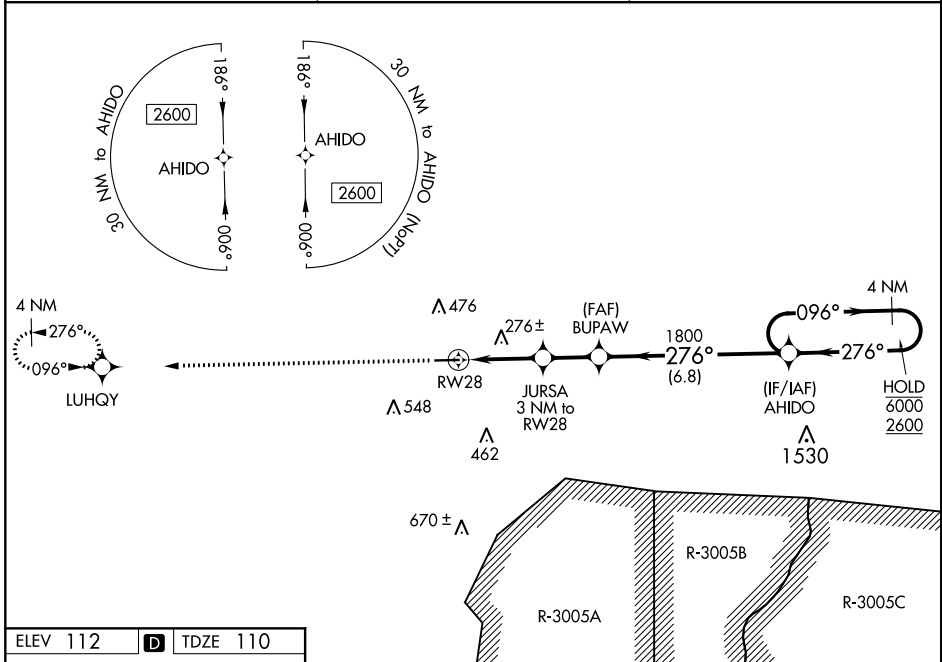
CLAXTON-EVANS COUNTY (C'WV)

RNP APCH GPS.

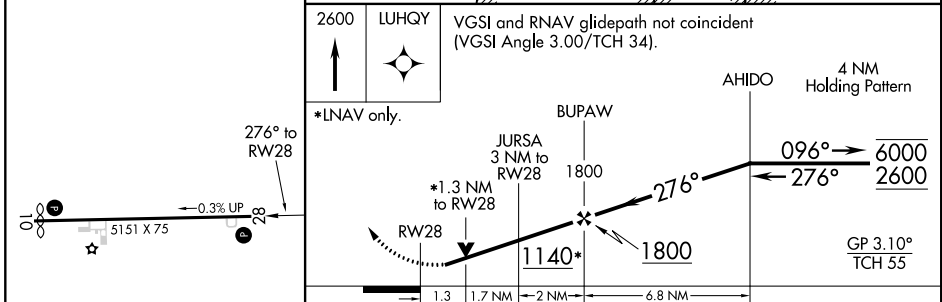
▼ Rwy 28 helicopter visibility reduction below 3/4 SM NA. For uncompensated Baro-VNAV systems, LNAV/VNAV NA below -15°C or above 54°C. Circling Rwy 10 NA at night.

MISSED APPROACH: Climb to 2600 direct LUHQY and hold.

AWOS-3 120.075	JACKSONVILLE CENTER 132.925 363.2	UNICOM 122.8 (CTAF) ①
--------------------------	---	---------------------------------



ELEV 112	D	TDZE 110
----------	----------	----------



CATEGORY	A	B	C	D
LPV DA		386-1	276 (300-1)	
LNAV/VNAV DA		403-1	293 (300-1)	
LNAV MDA	540-1	430 (500-1)	540-1¼	430 (500-1¼)
CIRCLING	580-1 468 (500-1)	780-1 668 (700-1)	860-2¼ 748 (800-1¼)	860-2½ 748 (800-2½)

SE-4, 16 JUN 2022 to 14 JUL 2022

SE-4, 16 JUN 2022 to 14 JUL 2022