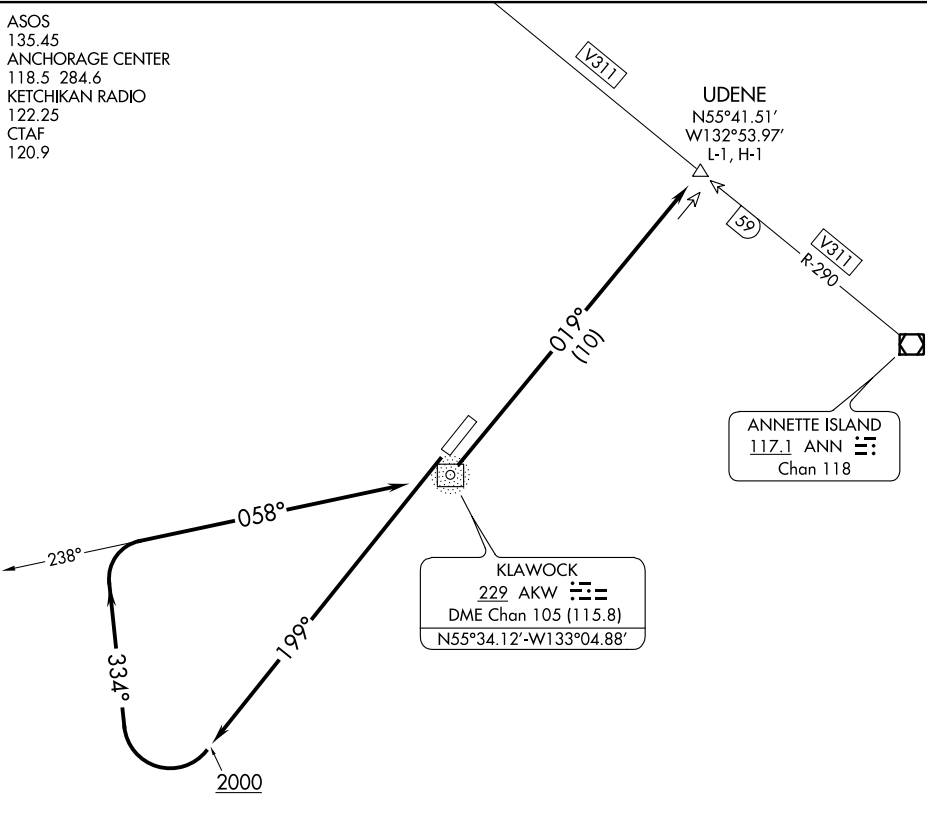


# KLAWOCK TWO DEPARTURE (OBSTACLE)

ASOS  
135.45  
ANCHORAGE CENTER  
118.5 284.6  
KETCHIKAN RADIO  
122.25  
CTAF  
120.9



AK, 19 MAY 2022 to 14 JUL 2022

AK, 19 MAY 2022 to 14 JUL 2022

### TAKEOFF MINIMUMS

Rwy 2: NA - Obstacles.

Rwy 20: Standard with a minimum climb of 427' per NM to 1500.

### TAKEOFF OBSTACLE NOTE

Rwy 20: Trees 5964' from DER, 1369' left of centerline, up to 158' AGL/357' MSL.

NOTE: DME required.

NOTE: Chart not to scale.

### DEPARTURE ROUTE DESCRIPTION

TAKEOFF RUNWAY 20: Climb heading 199° to 2000, then climbing right turn to 6000 on heading 334° to intercept bearing 238° from AKW NDB/DME to AKW NDB/DME, then on bearing 019° to UDENE INT/ANN 59 DME.