

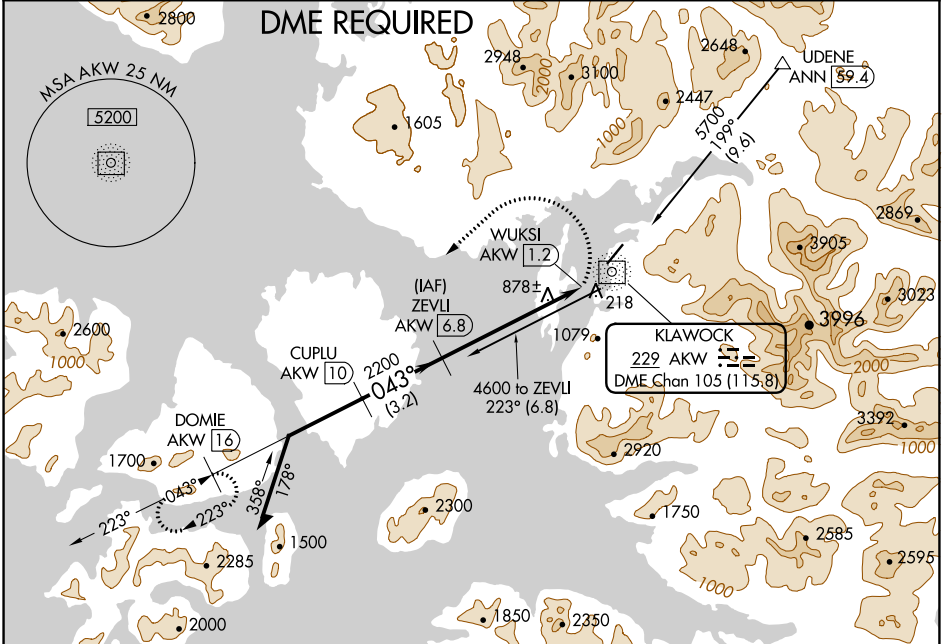
NDB/DME AKW 229	APP CRS 043°	Rwy Idg TDZE Apt Elev	5000 57 80
Chan 105 (115.8)			

NDB/DME RWY 2

KLAWOCK (AKW) (PAKW)

	Circling NA east of Rwy 2-20.	MISSED APPROACH: Climbing left turn to 3500 on heading 208° and AKW NDB/DME bearing 223° to DOME/16 DME and hold.

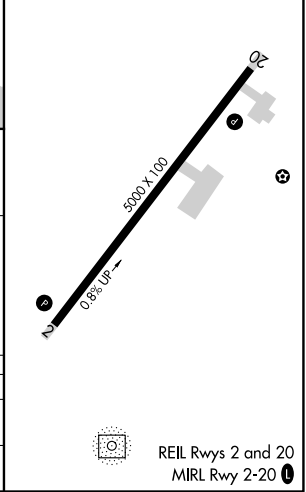
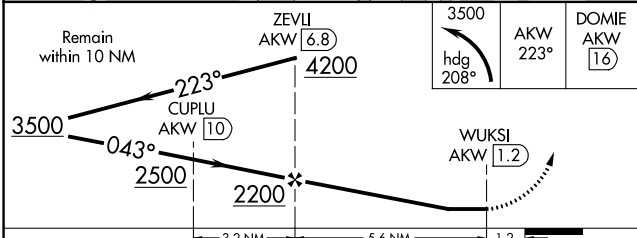
ASOS 135.45	ANCHORAGE CENTER 118.5 284.6	KETCHIKAN RADIO 122.25	CTAF 120.9
-----------------------	--	----------------------------------	----------------------



AK, 19 MAY 2022 to 14 JUL 2022

AK, 19 MAY 2022 to 14 JUL 2022

ELEV 80	TDZE 57
---------	---------



CATEGORY	A	B	C	D
S-2	1180-1½ 1123 (1100-1½)		1180-3 1123 (1100-3)	NA
CIRCLING	1180-1½ 1100 (1100-1½)		1180-3 1100 (1100-3)	NA

REIL Rws 2 and 20
MIRL Rwy 2-20