

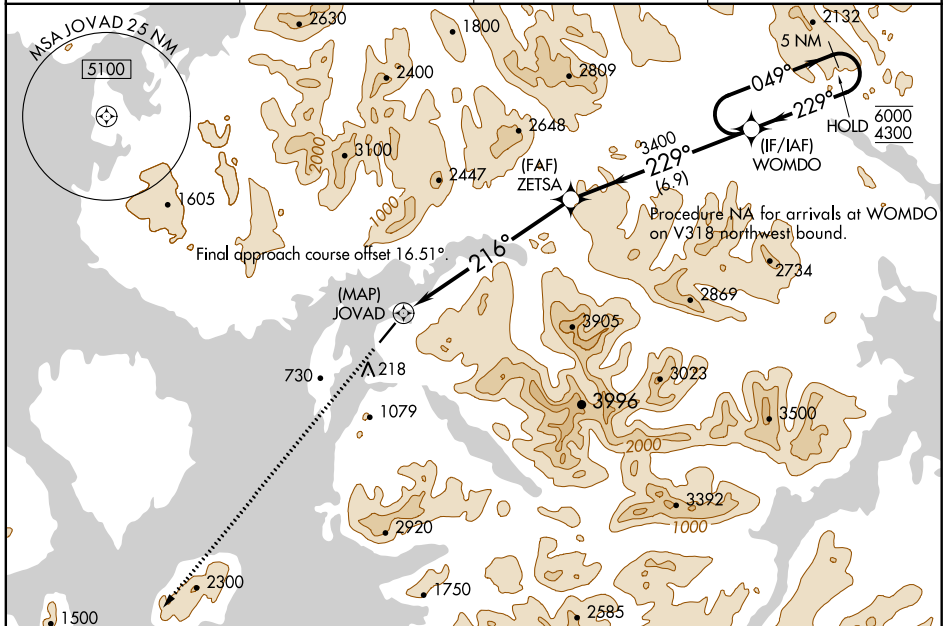
APP CRS	Rwy Idg	5000
216°	TDZE	80
	Apt Elev	80

RNAV (GPS) RWY 20

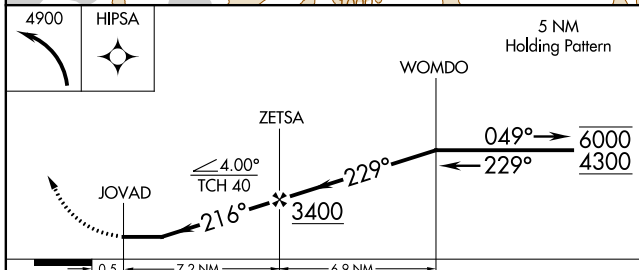
KLAWOCK (AKW) (PAKW)

RNP APCH.		MISSED APPROACH: Climbing left turn to 4900 direct HIPSA and hold.	
Rwy 20 helicopter visibility reduction below 1 SM NA. Circling NA east of Rwy 2-20. Procedure NA at night. -10°C			

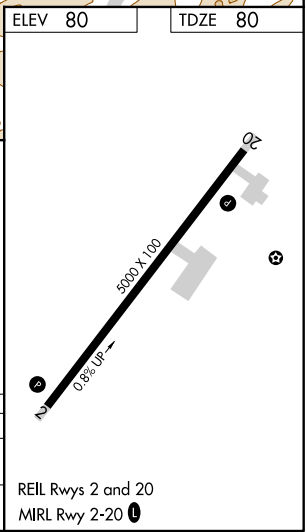
ASOS	ANCHORAGE CENTER	KETCHIKAN RADIO	CTAF
135.45	118.5 284.6	122.25	120.9



ELEV 80	TDZE 80
---------	---------



CATEGORY	A	B	C	D
LNVA MDA	2440-1¼ 2360 (2400-1¼)	2440-1½ 2360 (2400-1½)		NA
CIRCLING	2440-1¼ 2360 (2400-1¼)	2440-1½ 2360 (2400-1½)		NA



AK, 19 MAY 2022 to 14 JUL 2022

AK, 19 MAY 2022 to 14 JUL 2022