

APP CRS	Rwy Idg	5000
024°	TDZE	57
	Apt Elev	80

RNAV (GPS) Y RWY 2

KLAWOCK (AKW) (PAKW)

RNP APCH.	MISSED APPROACH: (Do not exceed 165K until BOHBI) Climbing left turn to 4200 direct BOHBI and hold, continue climb-in-hold to 4200.
Circling to Rwy 20 NA at night. Circling NA east of Rwy 2-20. -10°C	

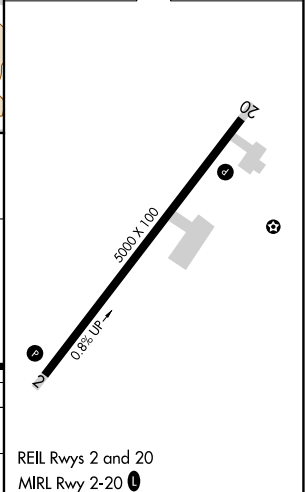
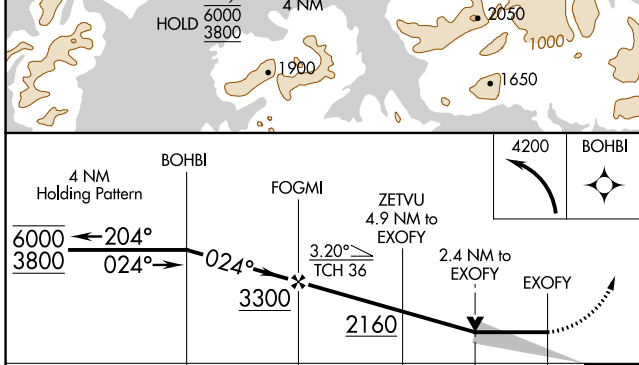
ASOS 135.45	ANCHORAGE CENTER 118.5 284.6	KETCHIKAN RADIO 122.25	CTAF 120.9
-----------------------	--	----------------------------------	----------------------



AK, 19 MAY 2022 to 14 JUL 2022

AK, 19 MAY 2022 to 14 JUL 2022

ELEV 80	TDZE 57
---------	---------



CATEGORY	A	B	C	D
LNVA MDA	1220-1½	1163 (1200-1½)	1220-3 1163 (1200-3)	NA
CIRCLING	1220-1½	1140 (1200-1½)	1300-3 1220 (1300-3)	NA

REIL Rwy 2 and 20
MIRL Rwy 2-20