

APP CRS	Rwy Idg	<b>3219</b>
<b>184°</b>	TDZE	<b>19</b>
	Apt Elev	<b>21</b>

# RNAV (GPS) RWY 18

TAMPA EXEC (VDF)

RNP APCH.

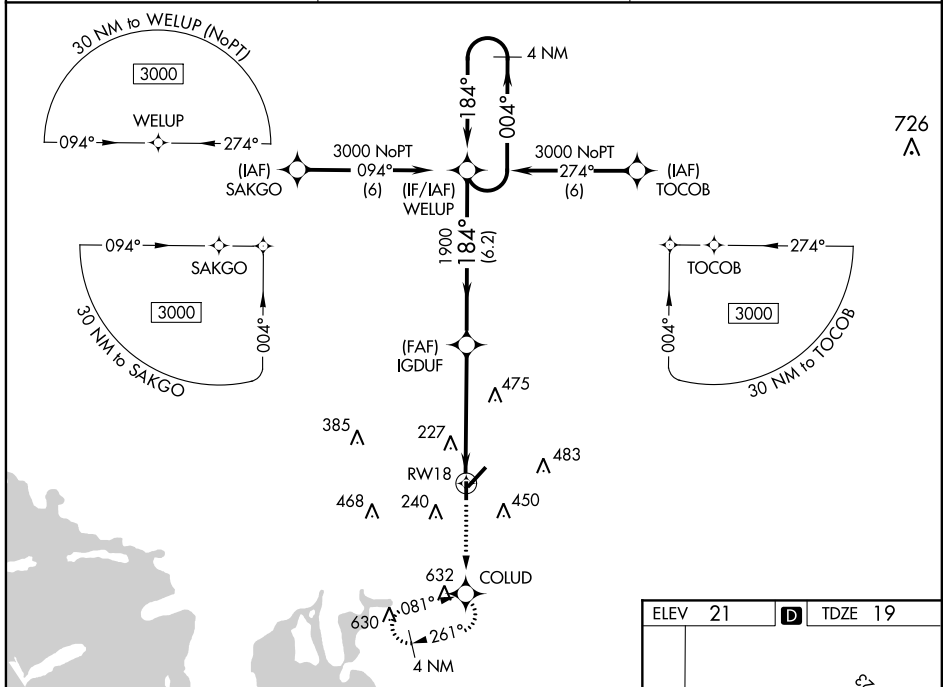
**⚠** When local altimeter not received, use Tampa Intl altimeter setting and increase all MDA 40 feet. Straight-in Rwy 18 NA at night, Circling Rwy 18, 36 NA at night. Rwy 18 helicopter visibility reduction below 1 SM NA.

**MISSED APPROACH:** Climb to 3000 direct COLUD and hold, continue climb-in-hold to 3000.

AWOS-3  
**121.125**

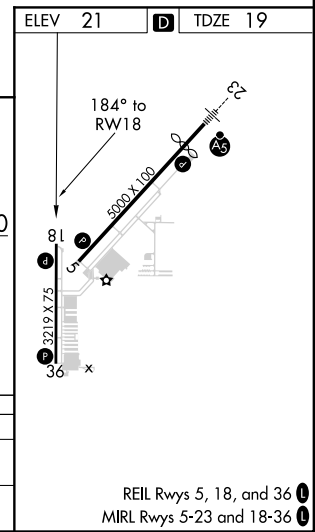
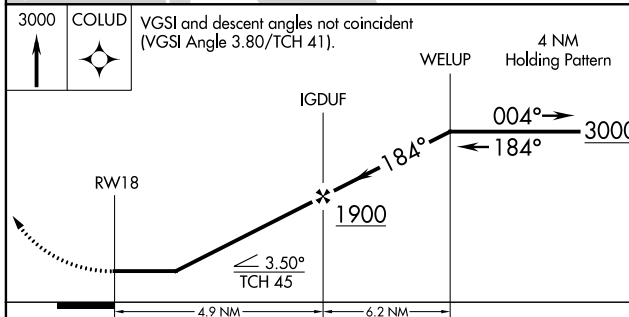
TAMPA APP CON  
**119.9 290.3**

UNICOM  
**122.7 (CTAF) 0**



SE-3, 16 JUN 2022 to 14 JUL 2022

SE-3, 16 JUN 2022 to 14 JUL 2022



CATEGORY	A	B	C	D
LNAV MDA	580-1	561 (600-1)		NA
<b>C</b> CIRCLING	580-1 559 (600-1)	760-1 739 (800-1)		NA

REIL Rws 5, 18, and 36  
MRL Rws 5-23 and 18-36