

WAAS CH 99437 W13A	APP CRS 124°	Rwy Idg TDZE 993 Apt Elev 993
---------------------------------	------------------------	---

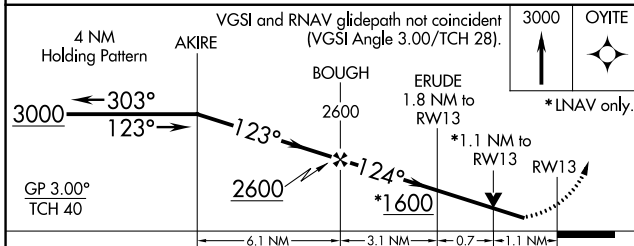
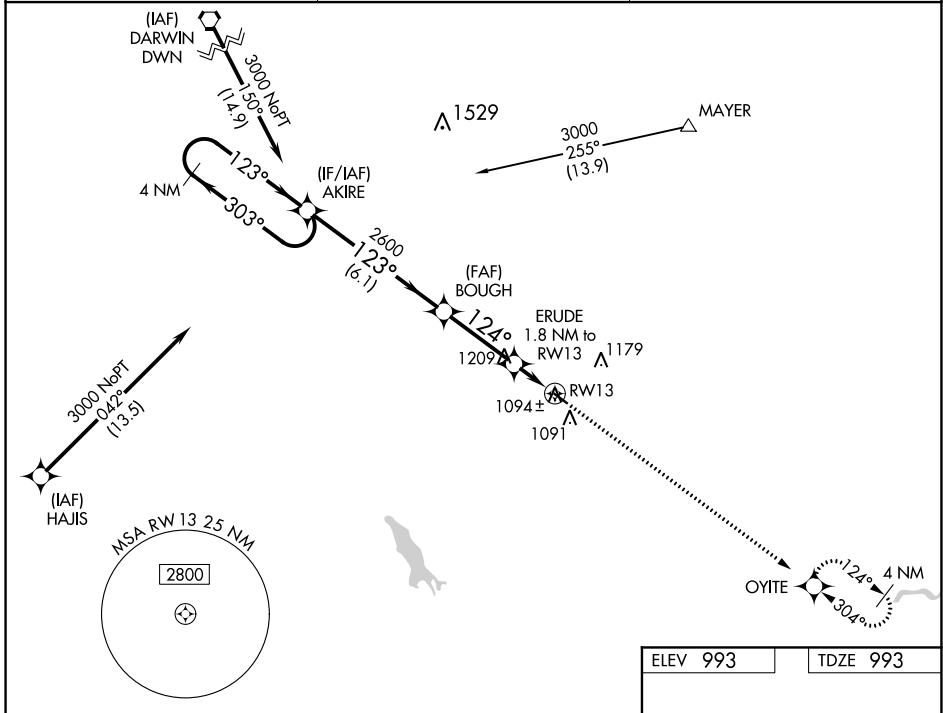
RNAV (GPS) RWY 13

GLENCOE MUNI (GYL)

▽ For uncompensated Baro-VNAV systems, LNAV/VNAV NA below -16°C (4°F) or above 54°C (130°F). DME/DME RNP-0.3 NA. Rwy 13 helicopter visibility reduction below 3/4 SM NA.

MISSED APPROACH:
Climb to 3000 direct OYITE and hold.

AWOS-3 119.625	MINNEAPOLIS APP CON 134.7 284.7	UNICOM 122.8 (CTAF) 0
--------------------------	---	---------------------------------



ELEV 993	TDZE 993
----------	----------

This diagram shows the final approach segment to RWY 13. It starts at a 3000 ft altitude and descends to 124° for 1.8 NM to ERUDE, then 1.1 NM to RWY 13. A 4 NM holding pattern is shown at OYITE. The diagram also shows the missed approach procedure: climb to 3000 ft and hold at OYITE. A note states: "REIL Rwy 13 and 31 0, MIRL Rwy 13-31 0".

CATEGORY	A	B	C	D
LPV DA	1270-1	277 (300-1)		NA
LNAV/VNAV DA	1246-1	253 (300-1)		NA
LNAV MDA	1360-1	367 (400-1)		NA
C CIRCLING	1420-1 427 (500-1)	1480-1 487 (500-1)		NA

NC-1, 16 JUN 2022 to 14 JUL 2022

NC-1, 16 JUN 2022 to 14 JUL 2022