

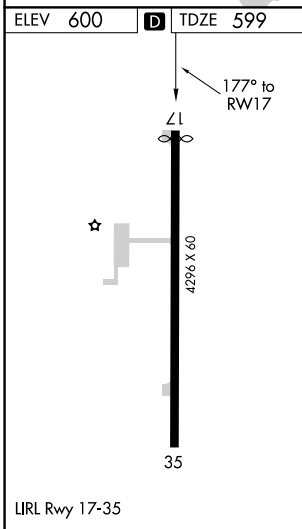
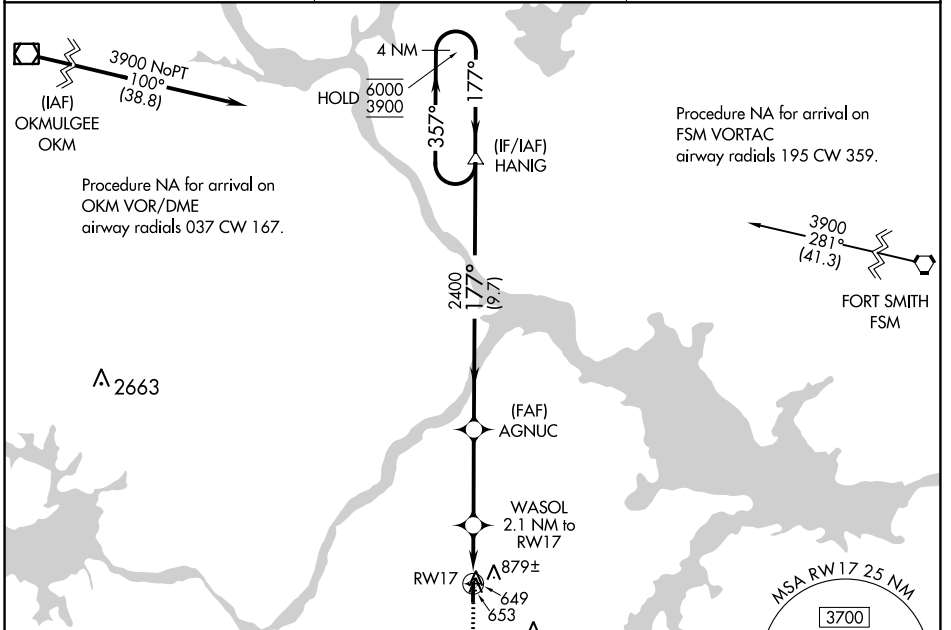
WAAS CH 65822 W17A	APP CRS 177°	Rwy Idg TDZE Apt Elev	4200 599 600
--	------------------------	-----------------------------	---

RNAV (GPS) RWY 17

STIGLER RGNL (GZL)

RNP APCH.	MISSED APPROACH: Climb to 3900 direct ELKVI and hold, continue climb-in-hold to 3900.
-----------	---

AWOS-3 118.575	FORT WORTH CENTER 132.2 338.35	CTAF 122.9
--------------------------	--	----------------------



Visual Segment - Obstacles.		4 NM Holding Pattern	
3900	ELKVI	AGNUC	HANIG
3900	2400	2400	6000 / 3900
2.1 NM	3.4 NM	9.7 NM	
CATEGORY	A	B	C D
LP MDA	900-1	301 (300-1)	NA
LNAV MDA	1020-1	421 (500-1)	NA
C CIRCLING	1180-1	580 (600-1)	NA

SC-1, 16 JUN 2022 to 14 JUL 2022

SC-1, 16 JUN 2022 to 14 JUL 2022