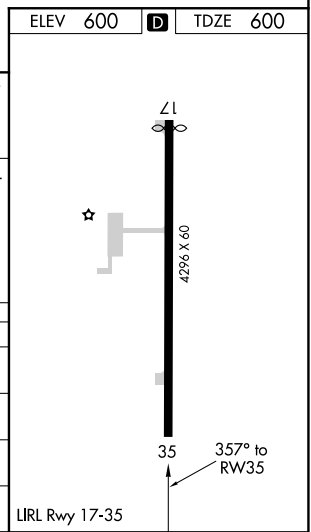
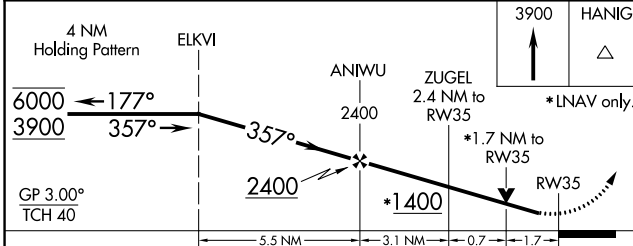
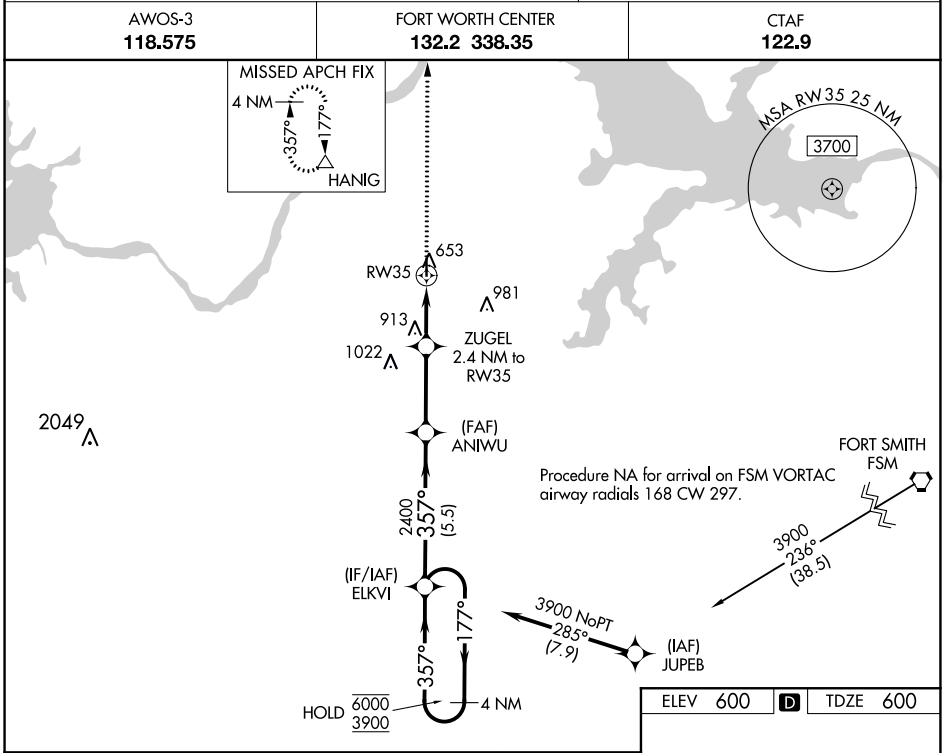


WAAS CH 82522 W35A	APP CRS 357°	Rwy Idg TDZE Apt Elev	4296 600 600
--	------------------------	-----------------------------	---

RNAV (GPS) RWY 35

STIGLER RGNL (GZL)

RNP APCH.	<p>▼ Circling Rwy 17 NA at night. Rwy 35 helicopter visibility reduction below $\frac{3}{4}$ SM NA. For uncompensated Baro-VNAV systems, LNAV/VNAV NA below -16°C or above 54°C.</p>	<p>MISSED APPROACH: Climb to 3900 direct HANIG and hold.</p>
AWOS-3 118.575		



CATEGORY	A	B	C	D
LPV DA	850-1	250 (300-1)		NA
LNAV/VNAV DA	867-1	267 (300-1)		NA
LNAV MDA	1180-1	580 (600-1)		NA
C CIRCLING	1180-1	580 (600-1)		NA

SC-1, 16 JUN 2022 to 14 JUL 2022

SC-1, 16 JUN 2022 to 14 JUL 2022