

APP CRS	Rwy Idg	4250
325°	TDZE	3560
	Apt Elev	3560

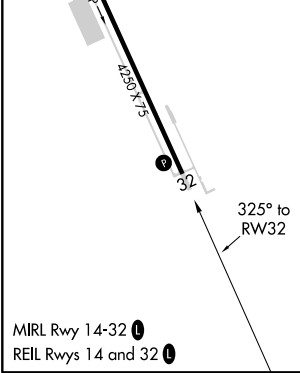
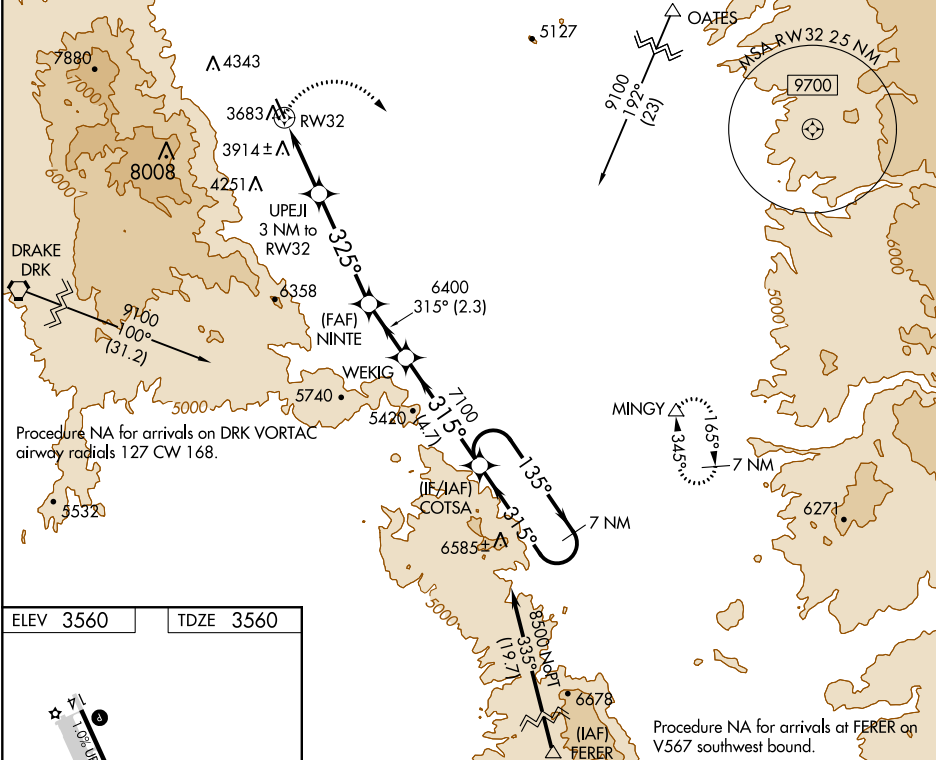
RNAV (GPS) RWY 32

COTTONWOOD (P52)

NA Circling NA southwest of Rwy 14-32. DME/DME RNP-0.3 NA. Procedure NA at night. Helicopter visibility reduction below 1 SM NA. When local altimeter setting not received, use Sedona altimeter setting and increase all MDA 200 feet, increase LNAV and Circling Cat A/B visibility ¼ mile, LNAV Cat C visibility ½ mile, Circling Cat C visibility ¾ mile.

MISSED APPROACH: Climbing right turn to 10000 direct MINGY and hold, continue climb-in-hold to 10000.

AWOS-3 119.925	PHOENIX APP CON 126.375 236.775	UNICOM 122.7 (CTAF)
---------------------------------	--	--------------------------------------



10000	MINGY				
		COTSA 7 NM Holding Pattern			
		UPEJI 3 NM to RW32	NINTE	WEKIG	COTSA
		325° to RW32	315°	315°	135°
		4740	6400	7100	8500
		3 NM	4.3 NM	2.3 NM	4.7 NM
CATEGORY	A	B	C	D	
LNAV MDA	4260-1	700 (700-1)	4260-2	700 (700-2)	NA
C CIRCLING	4260-1	700 (700-1)	4260-2	700 (700-2)	NA

SW-4, 16 JUN 2022 to 14 JUL 2022

SW-4, 16 JUN 2022 to 14 JUL 2022