

WAAS CH 93540 W17A	APP CRS 191°	Rwy Idg TDZE 136 Apt Elev 138	4000
--	------------------------	---	-------------

RNAV (GPS) RWY 17

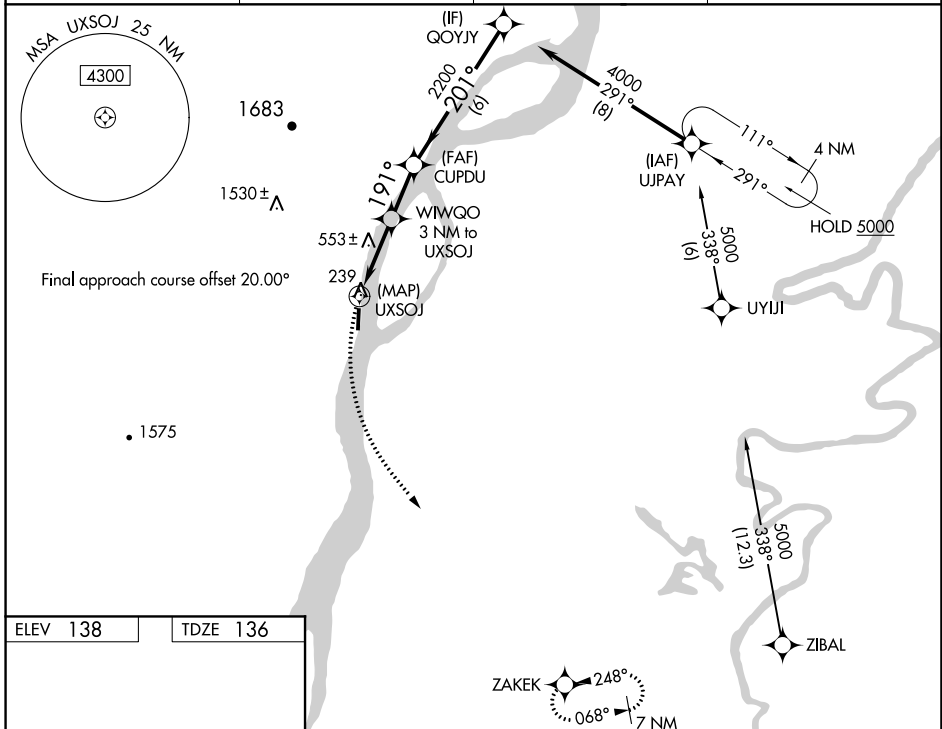
GRAYLING (KGX)(PAGX)

RADAR required for procedure entry.

NA Circling NA west of Rwy 17-35. Rwy 17 helicopter visibility reduction below ¼ SM NA. DME/DME RNP-0.3 NA. Use Shageluk altimeter setting; when not received, use Anvik altimeter setting.

MISSED APPROACH: Climbing left turn to 7000 direct ZAKEK and hold, continue climb-in-hold to 7000.

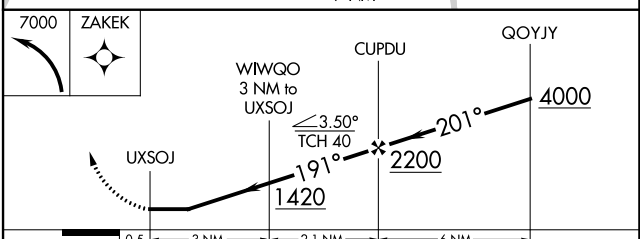
SHX/PAHX AWOS-3P 121.575	ANCHORAGE CENTER 118.15 251.05	KENAI RADIO 122.4	CTAF 122.9
------------------------------------	--	-----------------------------	----------------------



ELEV 138	TDZE 136
----------	----------

35

MIRL Rwy 17-35



CATEGORY	A	B	C	D
LP MDA	860-1	724 (800-1)	1360-2½	1224 (1300-2½)
LNAV MDA	1360-1¼ 1224 (1300-1¼)	1360-1½ 1224 (1300-1½)	1360-3	1224 (1300-3)
CIRCLING	1360-1¼ 1222 (1300-1¼)	1360-1½ 1222 (1300-1½)	1360-3 1222 (1300-3)	1420-3 1282 (1300-3)

AK, 19 MAY 2022 to 14 JUL 2022

AK, 19 MAY 2022 to 14 JUL 2022